

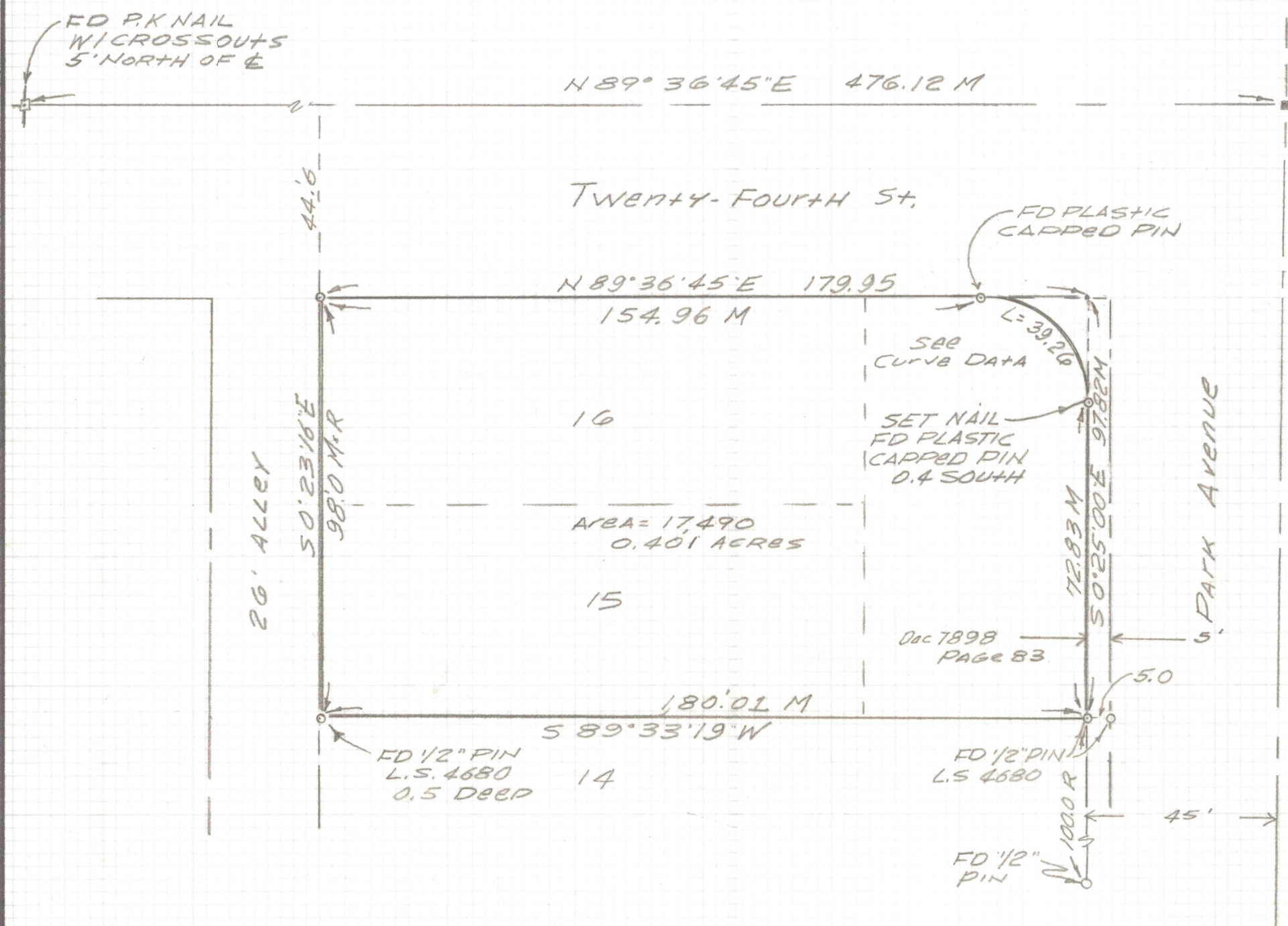
# **DISCLAIMER:**

**This unrecorded Record of Survey was donated to the City of Tucson. The City of Tucson provides this data for your personal use "as is." Additionally, the City of Tucson provides this information with the understanding that it is not guaranteed to be accurate, correct or complete and conclusions drawn from such information are the responsibility of the user.**



SCALE 1"=30'

CURVE DATA					
N°	RADIUS	DELTA	TANGENT	LENGTH	CHORD
①	25.0	89°58'15"	24.99	39.26	35.35



Notes

- 1) ♀ INDICATES SET 1/2" PIN MKD R.L.S. 25405 UNLESS NOTED
- 2) M- MEASURED
- 3) R- MAP OR DEED RECORD
- 4) \* BASIS OF BEARINGS N 0° 25' 00" W CENTERLINE OF PARK AVENUE PER SURVEY BY ROBERT F. MELLER REGISTERED LAND SURVEYOR (RETIRED) JOB# 91-124

RESULTS OF SURVEY

OF LOTS 15 AND 16 BLOCK 13 OF BRUCKNERS ADDITION RECORDED IN BOOK 4 OF MAPS AND PLATS AT PAGE 81C AND A PORTION OF BLOCK "C" KENTROSE PARK AS RECORDED IN BOOK 3 OF MAPS AND PLATS AT PAGE 56 IN THE OFFICE OF THE PIMA COUNTY RECORDER PIMA COUNTY ARIZONA



*Everett M. Trueblood*

EVERETT M. TRUEBLOOD  
 Registered Land Surveyor  
 TUCSON, ARIZONA  
 JOB# 98-101