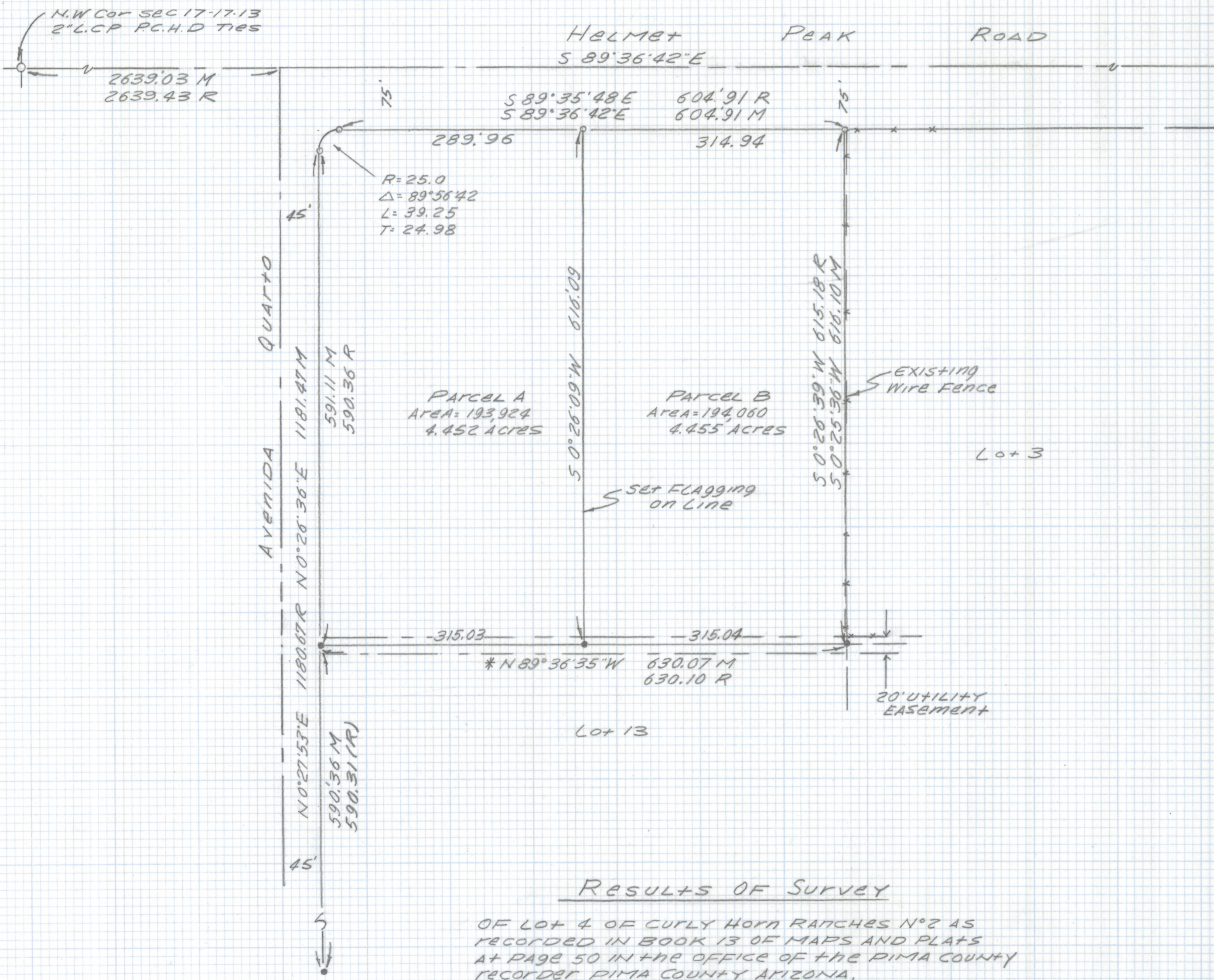
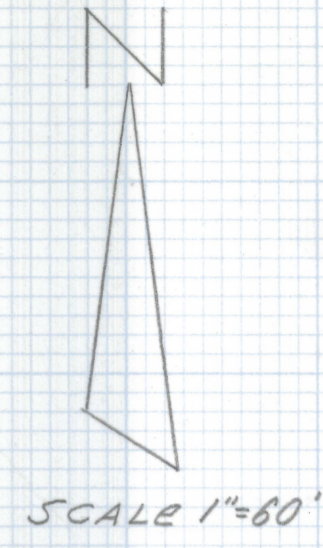


DISCLAIMER:

This unrecorded Record of Survey was donated to the City of Tucson. The City of Tucson provides this data for your personal use "as is." Additionally, the City of Tucson provides this information with the understanding that it is not guaranteed to be accurate, correct or complete and conclusions drawn from such information are the responsibility of the user.



N.E. Cor SEC 17-17-13
 SET NAIL
 PER TIE SHEET
 DATED 2-27-90

R=25.0
 Δ=89°56'42
 L=39.25
 T=24.98

PARCEL A
 AREA=193,924
 4.452 ACRES

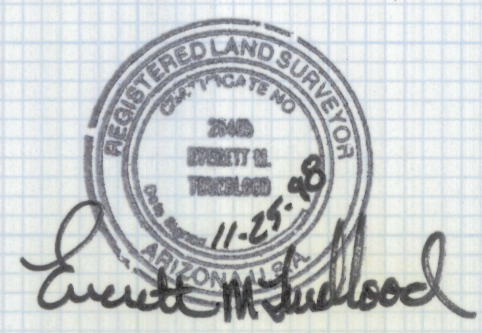
PARCEL B
 AREA=194,060
 4.455 ACRES

NOTES

- 1) ♀ INDICATES SET 1/2" PIN MKD R.L.S. 25405 UNLESS NOTED
- 2) M- MEASURED
- 3) R- MAP OF DEED RECORD
- 4) * BASIS OF BEARINGS N 89°36'35" W SOUTH LINE OF LOT 4 CURLY HORN RANCHES NO 2 PER BOOK 13 PAGE 50 MAPS AND PLATS
- 5) NO TITLE REPORT FURNISHED FOR THIS SURVEY
- 6) ♀ INDICATES FOUND 1/2" PIN R.L.S. 13187 UNLESS NOTED

RESULTS OF SURVEY

OF LOT 4 OF CURLY HORN RANCHES NO 2 AS RECORDED IN BOOK 13 OF MAPS AND PLATS AT PAGE 50 IN THE OFFICE OF THE PIMA COUNTY RECORDER PIMA COUNTY ARIZONA.



EVERETT M. TRUEBLOOD
 REGISTERED LAND SURVEYOR
 TUCSON, ARIZONA
 JOB # 98-190