

DISCLAIMER:

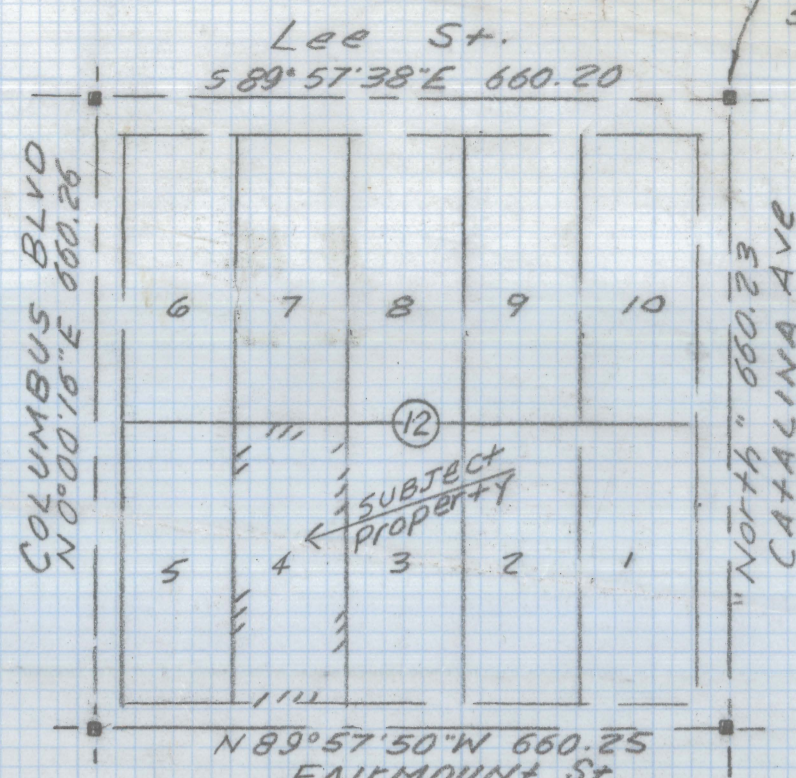
This unrecorded Record of Survey was donated to the City of Tucson. The City of Tucson provides this data for your personal use "as is." Additionally, the City of Tucson provides this information with the understanding that it is not guaranteed to be accurate, correct or complete and conclusions drawn from such information are the responsibility of the user.

END 1/2" PIN
L.S. 4253

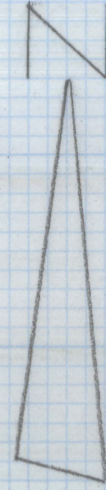
SET +19 MKD
R.L.S. 25405
IN CONC.

END 2" BRASS
PLUG IN CONC
5' NORTH OF E
(TYP)

589°57'31"E 120.00 R
61.50 120.05 M 58.55



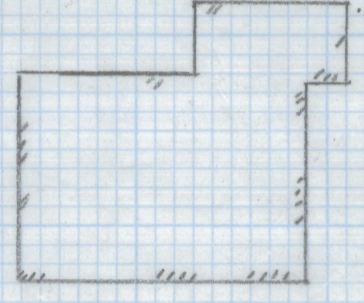
Lee St.
589°57'38"E 660.20
COLUMBUS BLVD
N 0°00'10"E 660.25
N 0°00'10"E 660.25
N 89°57'50"W 660.25
FAIRMOUNT ST
LOCATION MAP
BLOCK 12 SPEEDWAY Add.
BOOK 3 PAGE 87 M&P
PIMA COUNTY ARIZ.
SCALE 1"=200'



BLOCK WALL

PARCEL 4-A
AREA=18,458
0.423 AC

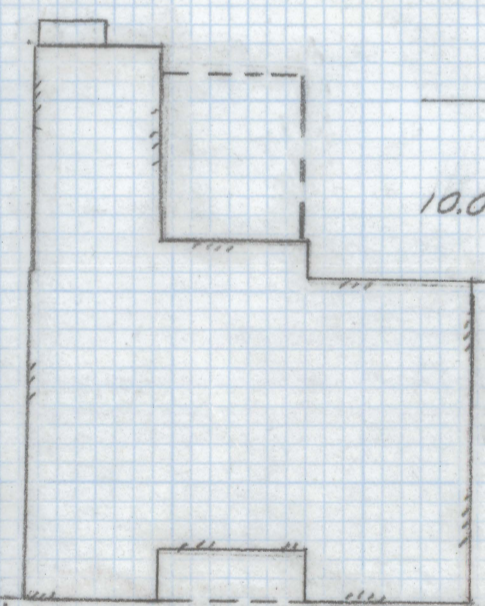
N 0°00'12"E 300.00 R
300.13 (M)



300.12
50°00'10"W

300.00 R
300.12xM
50°00'09"W

6' BOARD FENCE



See Exhibit B10.6
PROPOSED
15' INGRESS/EGRESS
UTILITY EASEMENT
PARCEL 4-B
AREA=17,572
0.403 ACRES

4.80
CHAIN LINK FENCE

END 1/2" PIN RE 2067

61.50 120.05 M 58.55
N 89°57'50"W 120.00 R

MONUMENT LINE

FAIRMOUNT Street

SCALE 1"=20'

GENERAL NOTES

- ° Indicates set 1/2" pin mkd RLS 25405 unless noted.
- M - Measured
- R - Map or deed record
- * Basis of bearings North (assumed) centerline of Catalina Avenue East side of Block 12 of Speedway Addition Book 3 Page 87 of Maps and Plats.
- No title report furnished for this survey.



RESULTS OF SURVEY

Of Lot 4 Block 12 of Speedway Addition as recorded in Book 3 of Maps and Plats at Page 87 in the office of the Pima County Recorder, Pima County, Arizona.

DATE	REVISIONS
EVERETT M. TRUEBLOOD LAND SURVEYING 2300 West Ian Place Tucson, AZ 85741 (520) 888-2549	
Drawn By: EMT	Checked By: EMT
Job No. 99-20	Scale: 1" = 20'
Date: February 3, 1999	Sheet 1 of 1

Z-2021-0104