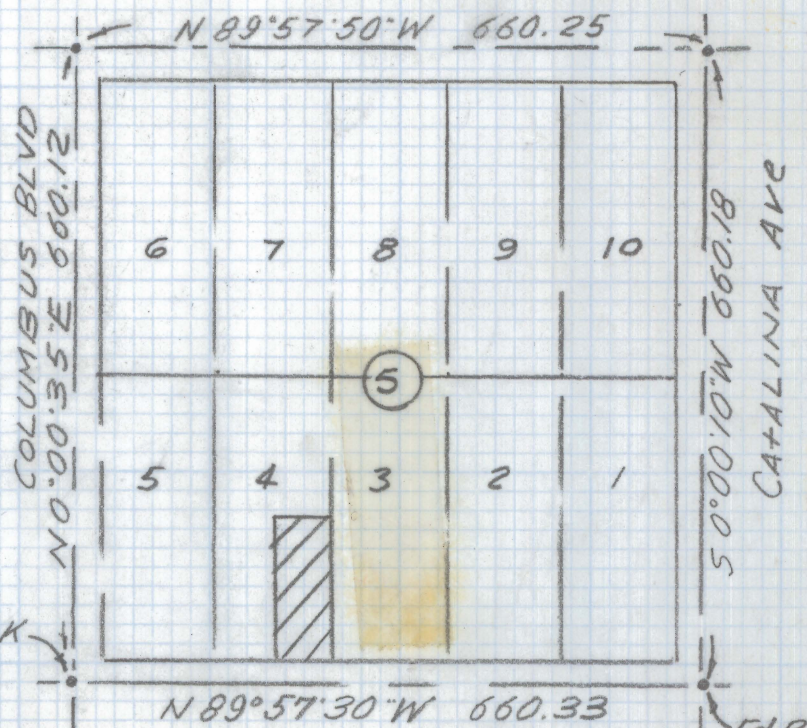
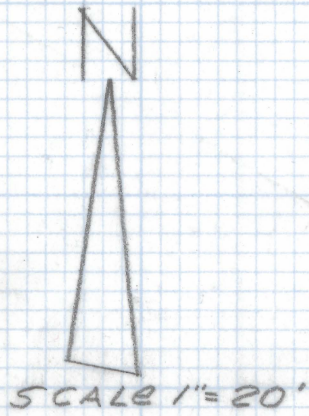


DISCLAIMER:

This unrecorded Record of Survey was donated to the City of Tucson. The City of Tucson provides this data for your personal use "as is." Additionally, the City of Tucson provides this information with the understanding that it is not guaranteed to be accurate, correct or complete and conclusions drawn from such information are the responsibility of the user.

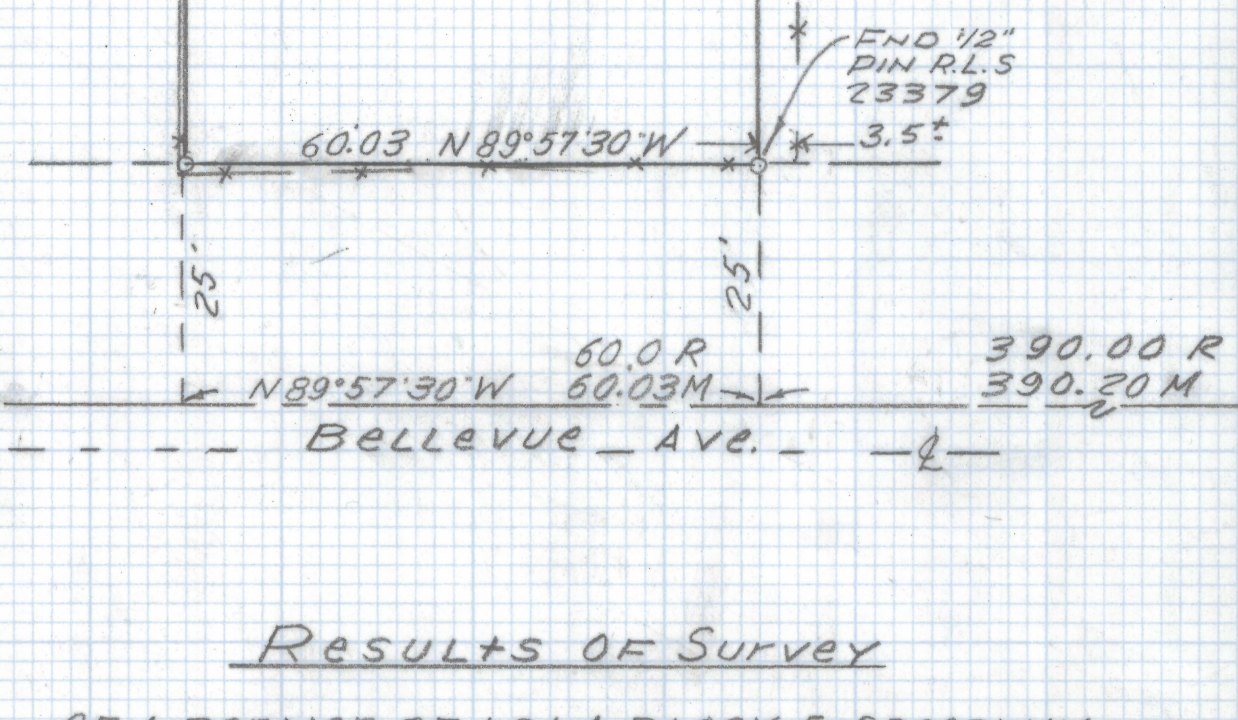
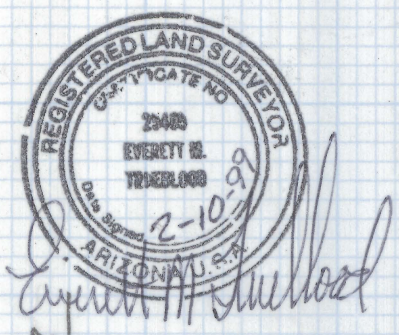


N 89° 57' 30" W 660.33
 BELLEVUE ST
 LOCATION MAP
 BLOCK 5 SPEEDWAY ADDITION
 BOOK 3 PG 87 M&P
 PIMA COUNTY ARIZ
 SCALE 1"=200'

Lot 3

Notes

- 1) ♀ INDICATES SET 1/2" PIN MKD R.L.S. 25405 UNLESS NOTED.
- 2) M- MEASURED
- 3) R- MAP OR DEED RECORD
- 4) * BASIS OF BEARINGS N 89° 57' 50" W MONUMENT LINE FAIRMOUNT ST PER JOB # 99-20
- 5) NO TITLE REPORT FURNISHED FOR THIS SURVEY.



Results of Survey

OF A PORTION OF LOT 4 BLOCK 5 SPEEDWAY
 ADDITION AS RECORDED IN BOOK 3 OF MAPS
 AND PLATS AT PAGE 87 IN THE OFFICE OF
 THE PIMA COUNTY RECORDER PIMA COUNTY
 ARIZONA

Everett M. Trueblood
 Registered Land Surveyor
 TUCSON, ARIZONA
 JOB # 99-23