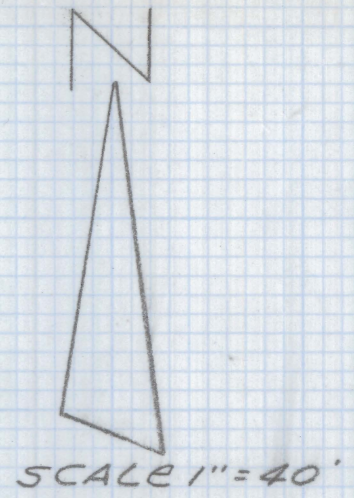
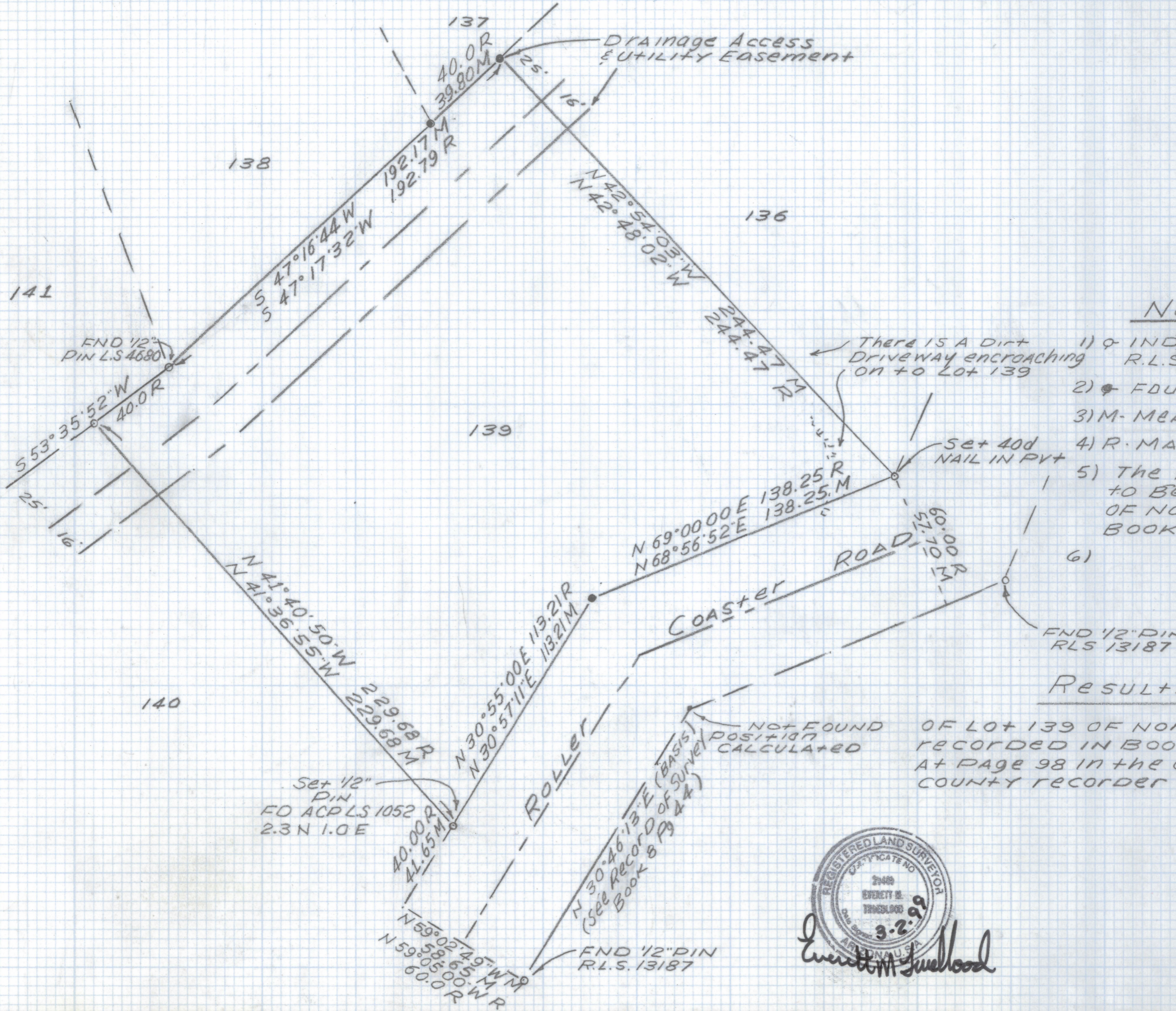


# **DISCLAIMER:**

**This unrecorded Record of Survey was donated to the City of Tucson. The City of Tucson provides this data for your personal use "as is." Additionally, the City of Tucson provides this information with the understanding that it is not guaranteed to be accurate, correct or complete and conclusions drawn from such information are the responsibility of the user.**



Notes

- 1) ♀ INDICATES SET 1/2" PIN MKD R.L.S. 25405 UNLESS NOTED
- 2) ♂ FOUND 1/2" PIN UNLESS NOTED
- 3) M - MEASURED
- 4) R - MAP OR DEED RECORD
- 5) THE 1/2" PINS FOUND ARE BELIEVED TO BE THE ORIGINAL CORNERS OF NORTHERN HILLS ESTATES BOOK 16 PAGE 98 M&P
- 6) END 1/2" PIN RLS 13187

RESULTS OF SURVEY

OF LOT 139 OF NORTHERN HILLS ESTATES AS RECORDED IN BOOK 16 OF MAPS AND PLATS AT PAGE 98 IN THE OFFICE OF THE PIMA COUNTY RECORDER PIMA COUNTY ARIZONA.

NOT FOUND POSITION CALCULATED



*Everett M. Trueblood*

EVERETT M. TRUEBLOOD  
Registered Land Surveyor  
TUCSON, ARIZONA  
JOB # 99-43