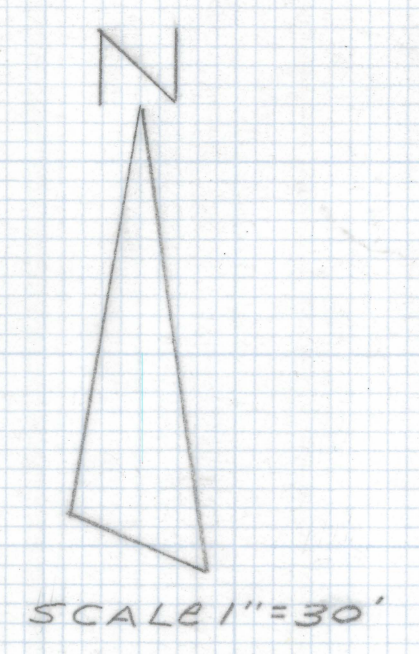
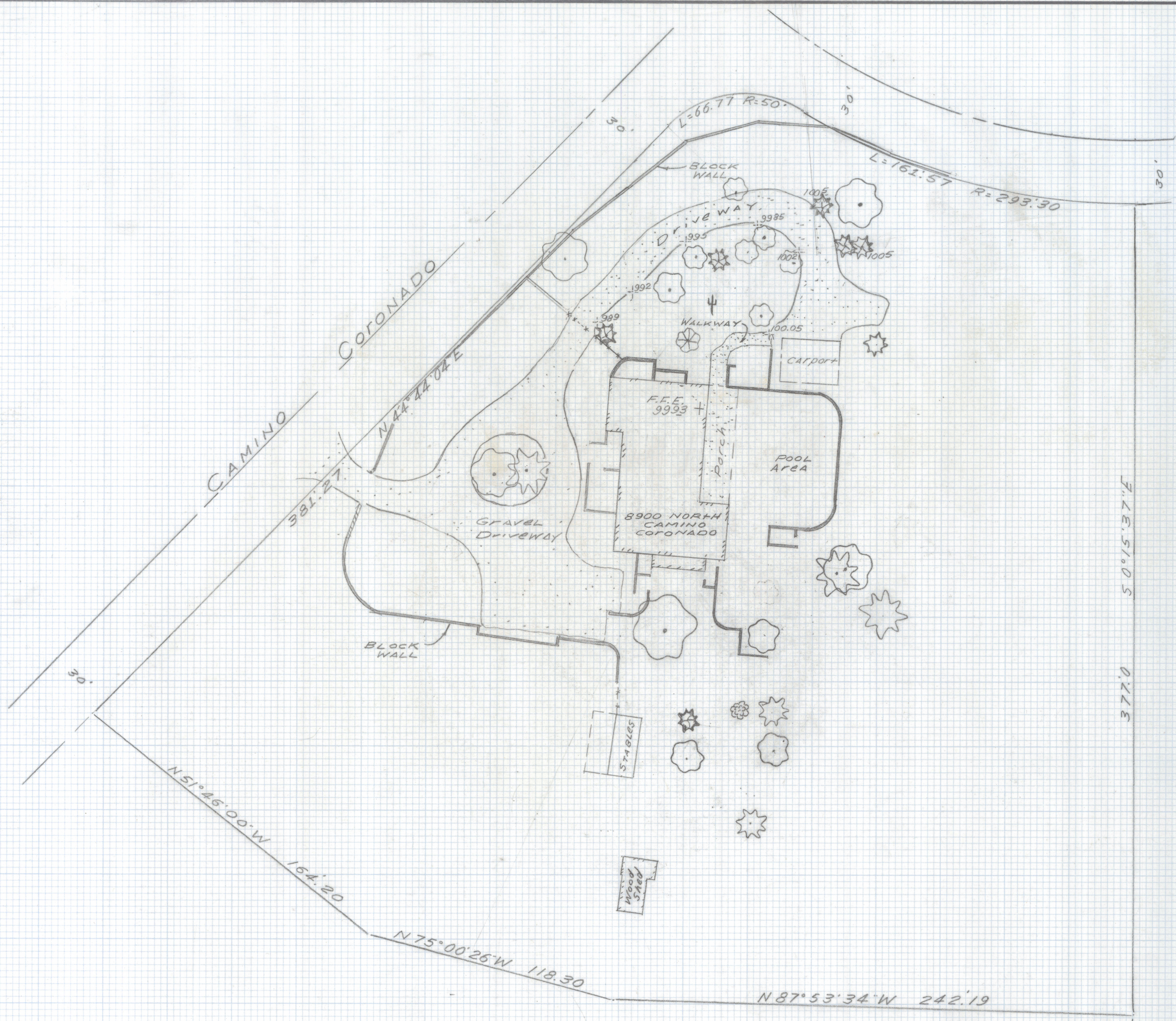

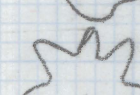

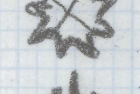
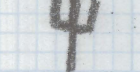


DISCLAIMER:

This unrecorded Record of Survey was donated to the City of Tucson. The City of Tucson provides this data for your personal use "as is." Additionally, the City of Tucson provides this information with the understanding that it is not guaranteed to be accurate, correct or complete and conclusions drawn from such information are the responsibility of the user.



NOTES:
 1. See boundary survey by Everett Trueblood Land Surveying, Job # 97-121, dated 10/22/97

-  MESQUITE TREE
-  PALO VERDE
-  FRUIT TREE
-  PALM TREE
-  SAGUARO

SKETCH OF:
 Location of existing house and vegetation located over a portion of Tract 14 of Campo Bello Subdivision as recorded in Book 7 of Maps and Plats at Page 70 in the office of the Pima County Recorder, Pima County, Arizona.



DATE	REVISIONS
EVERETT M. TRUEBLOOD LAND SURVEYING 2300 West Ian Place Tucson, AZ 85741 (520) 888-2549	
Drawn By: EMT	Checked By: EMT
Job No. 99-67	Date: May 5, 1999
Scale: 1" = 30'	Sheet 1 of 1