

# **DISCLAIMER:**

**This unrecorded Record of Survey was donated to the City of Tucson. The City of Tucson provides this data for your personal use "as is." Additionally, the City of Tucson provides this information with the understanding that it is not guaranteed to be accurate, correct or complete and conclusions drawn from such information are the responsibility of the user.**

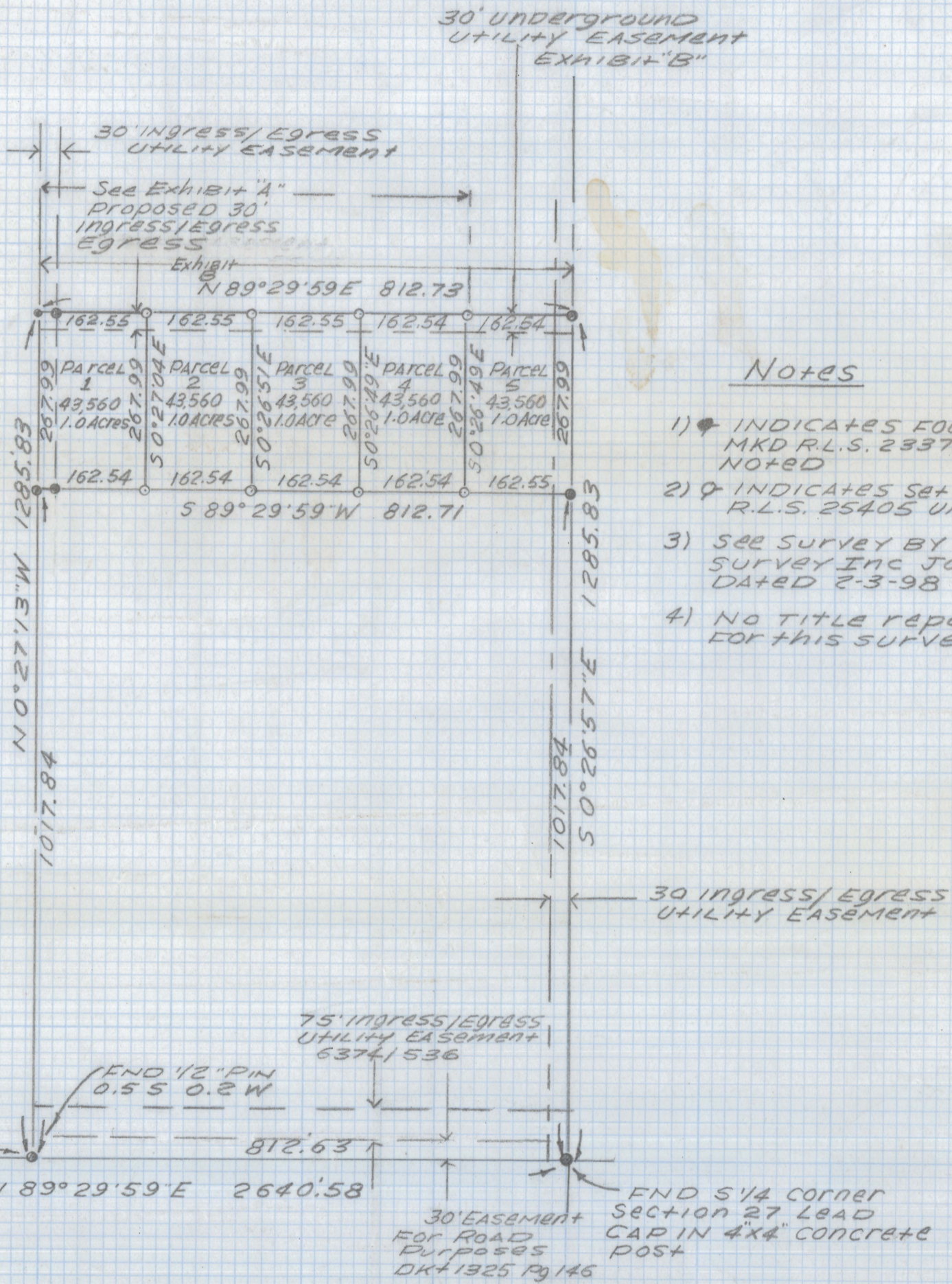


SPECIAL NOTE

ALL EASEMENTS SHOWN ON THIS SURVEY, EXCEPT EXHIBIT "A" WERE TAKEN FROM MAP OF SURVEY NOTED IN NOTE #3.



SCALE 1"=200'

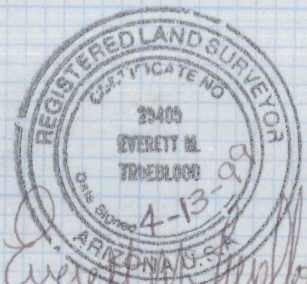


Notes

- 1) \* INDICATES FOUND 1/2" PIN MKD R.L.S. 23379 UNLESS NOTED
- 2) ♀ INDICATES SET 1/2" PIN MKD R.L.S. 25405 UNLESS NOTED
- 3) SEE SURVEY BY ARROW LAND SURVEY INC JOB# 99057 DATED 2-3-98
- 4) NO TITLE REPORT FURNISHED FOR THIS SURVEY

RESULTS OF SURVEY

OF A PORTION OF THE WEST HALF OF SECTION 27 TOWNSHIP 16 SOUTH RANGE 16 EAST G.S.R.B.M PIMA COUNTY ARIZONA



EVERETT M. TRUEBLOOD  
Registered Land Surveyor  
TUCSON, ARIZONA  
JOB# 99-49

EXHIBIT A & B  
REVISED EASEMENTS 4-19-99