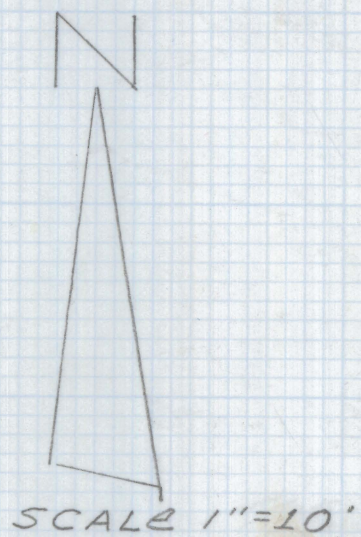
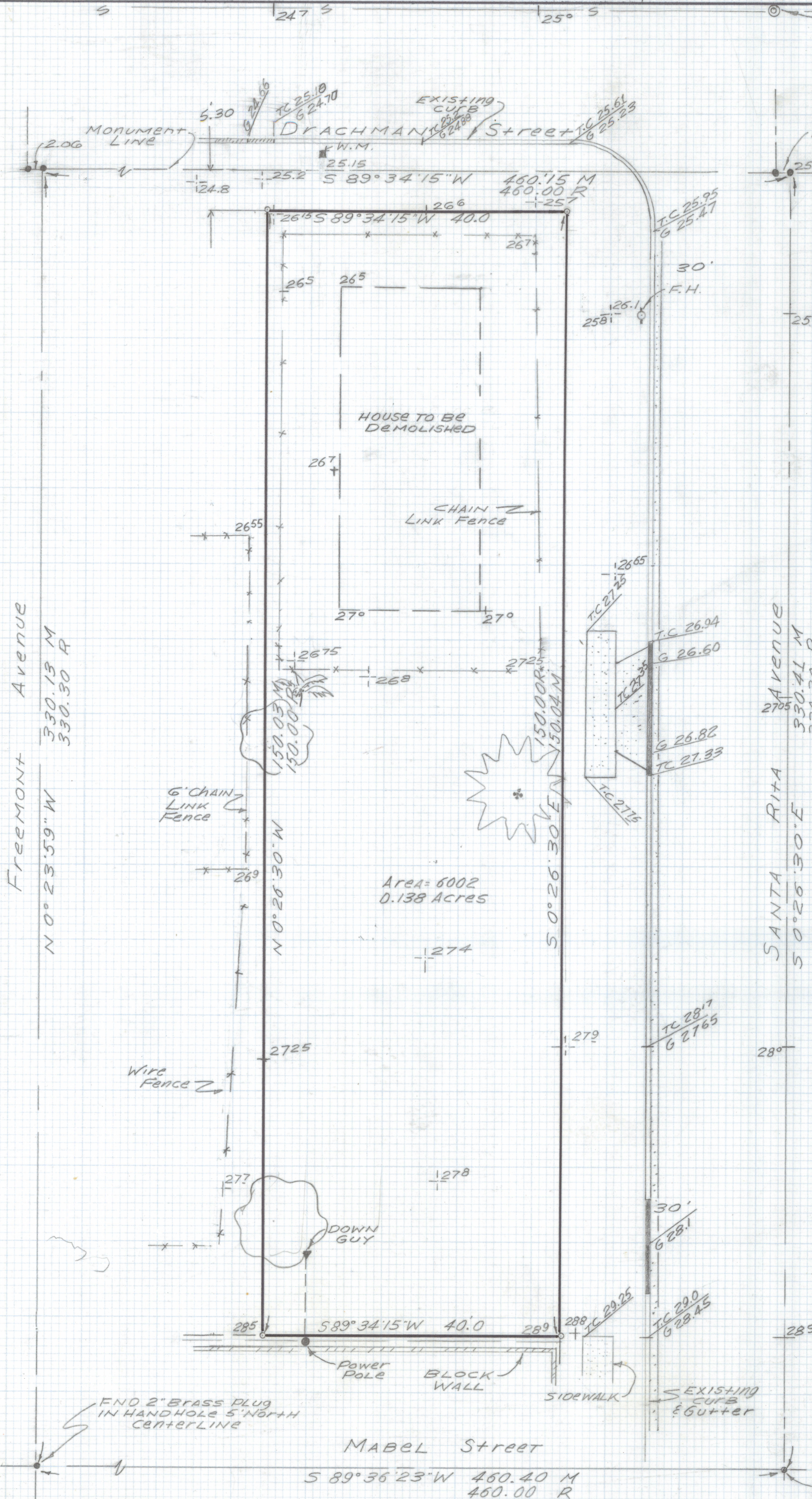


DISCLAIMER:

This unrecorded Record of Survey was donated to the City of Tucson. The City of Tucson provides this data for your personal use "as is." Additionally, the City of Tucson provides this information with the understanding that it is not guaranteed to be accurate, correct or complete and conclusions drawn from such information are the responsibility of the user.



NOTE
 There are UNDERGROUND UTILITIES IN THE AREA CALL BLUE STAKE BEFORE CONSTRUCTION

- GENERAL NOTES**
1. ° Indicates set 1/2" pin mkd RLS 25405 unless noted.
 2. M - Measured
 3. R - Map or deed record
 4. Basis of bearings South 89° 34' 15" West monument line shown on University Home Addition Subdivision on Drachman Street South of Block 14.
 5. No title report furnished for this survey.
 6. Basis of elevation 18.00 flow line of MH #2 shown on Drachman Street Sewer and Paving Plans, Plan # I-455 sheet 2 of 5.



RESULTS OF SURVEY

Of the East 40 feet of Lots 1, 4 and 5, Block 2 of Buena Vista Addition to the City of Tucson according to the plat of record in the office of the County Recorder of Pima County, Arizona, recorded in Book 1 of Maps and Plats at Page 20.

DATE	REVISIONS
EVERETT M. TRUEBLOOD LAND SURVEYING 2300 West Ian Place Tucson, AZ 85741 (520) 888-2549	
Drawn By: EMT	Checked By: EMT
Job No. 99-151	Date: September 10, 1999
Scale: 1" = 10'	Sheet 1 of 1