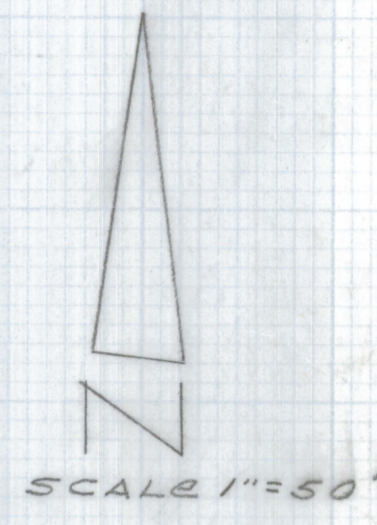
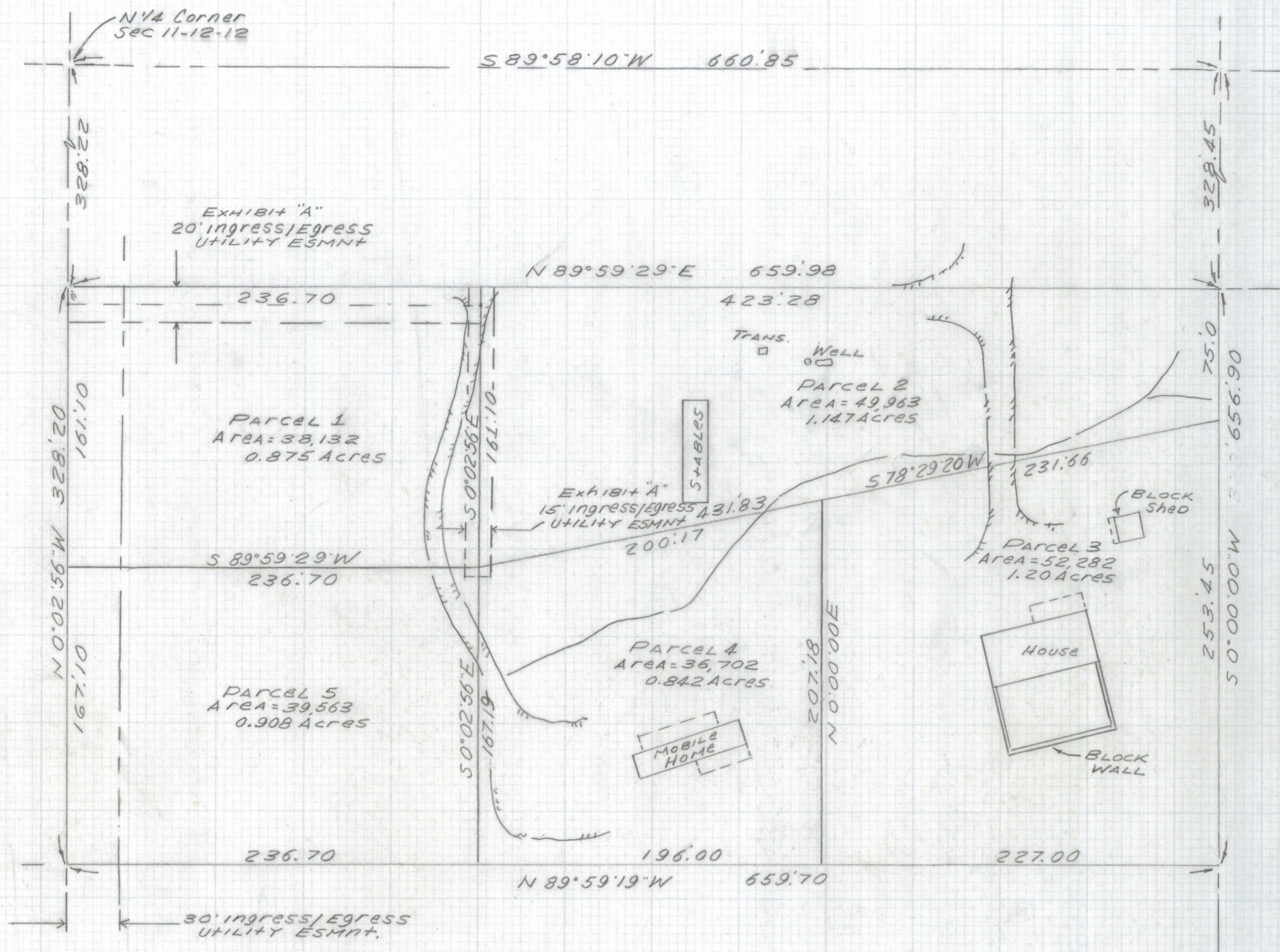


DISCLAIMER:

This unrecorded Record of Survey was donated to the City of Tucson. The City of Tucson provides this data for your personal use "as is." Additionally, the City of Tucson provides this information with the understanding that it is not guaranteed to be accurate, correct or complete and conclusions drawn from such information are the responsibility of the user.



Notes

- 1) BOUNDARY INFORMATION TAKEN FROM SURVEY BY TOM LUCKOW LAND SURVEYOR INC. JOB# 90118 DATED AUGUST 1990
- 2) SEE SURVEY BY STITZER, JOHNSON & ASSOCIATES JOB# 6869 DATED 2-13-86

SKETCH
OF
LEGAL DESCRIPTIONS

OF A PORTION OF THE NORTHWEST QUARTER OF THE NORTHEAST QUARTER SECTION 11 TOWNSHIP 12 SOUTH RANGE 12 EAST GILA SALT RIVER BASE AND MERIDIAN PIMA COUNTY ARIZONA.



EVERETT TRUEBLOOD
Registered Land Surveyor
TUCSON, ARIZONA
JOB# 99-212