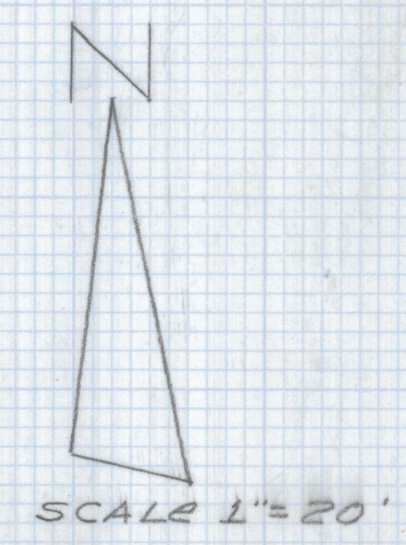
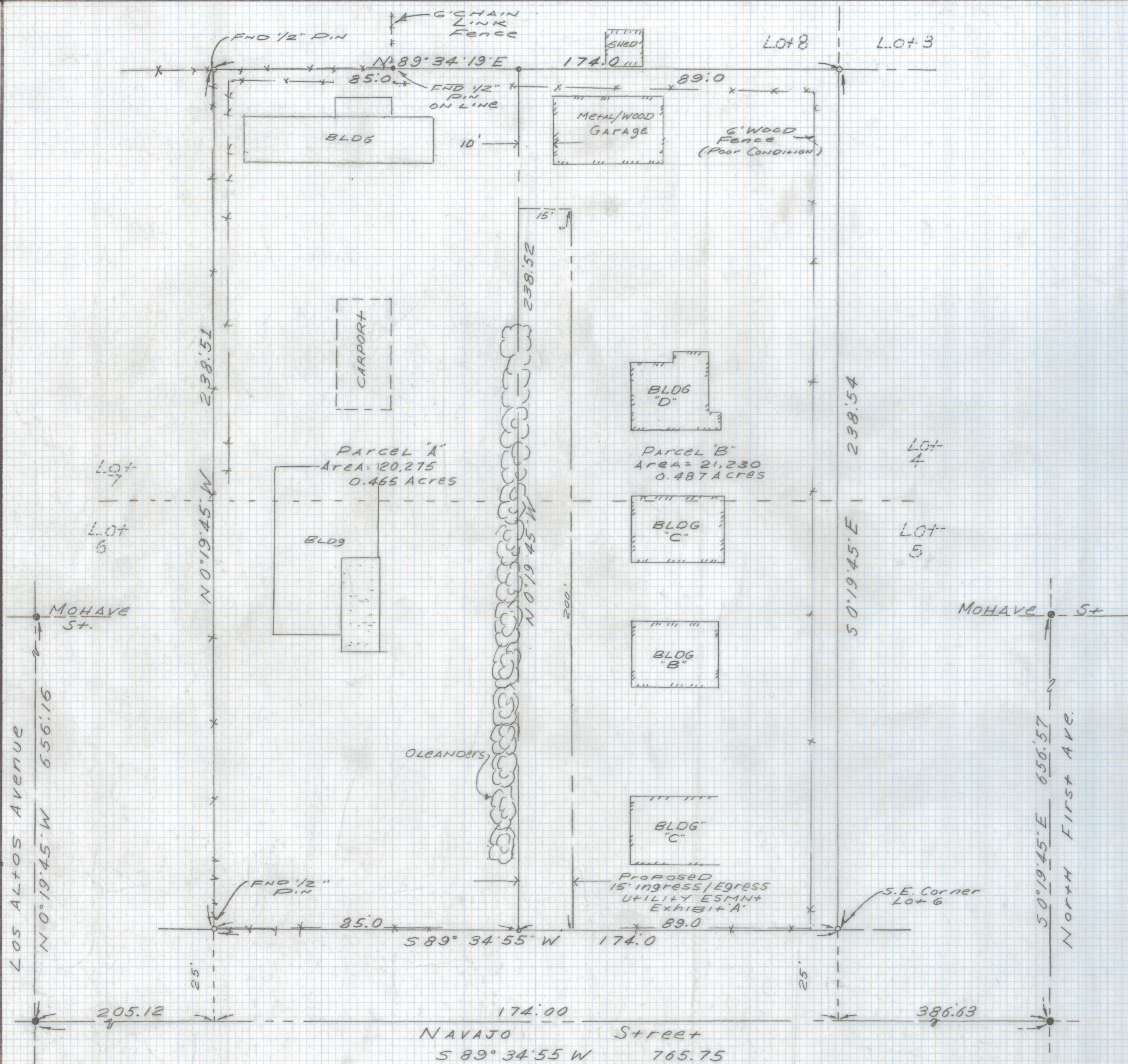


# **DISCLAIMER:**

**This unrecorded Record of Survey was donated to the City of Tucson. The City of Tucson provides this data for your personal use "as is." Additionally, the City of Tucson provides this information with the understanding that it is not guaranteed to be accurate, correct or complete and conclusions drawn from such information are the responsibility of the user.**



**GENERAL NOTES**

1. ° Indicates set 1/2" pin mkd RLS 25405, unless noted.
2. • Indicates found 2" brass cap in concrete, 5' North of centerline of street.
3. M. - Measured
4. R - Map or deed record
5. Basis of bearings: South 0° 19' 45" East center line of North First Avenue per Garden Homes Book 6 Page 41, Maps and Plats.
6. No title report furnished for this survey.

**RESULTS OF SURVEY**

Of the East 174.0 feet of Lots 6 and 7 of Block 9 of Garden Homes, according to the map of record in the office of the County Recorder of Pima County, Arizona in Book 6 of Maps and Plats at Page 41.



DATE		REVISIONS	
<b>EVERETT M. TRUEBLOOD LAND SURVEYING</b>			
2300 West Ian Place			
Tucson, AZ 85741			
(520) 888-2549			
Drawn By: EMT	Checked By: EMT	Date: December 13, 1999	
Job No. 99-219	Scale: 1" = 20'	Sheet: 1 of 1	