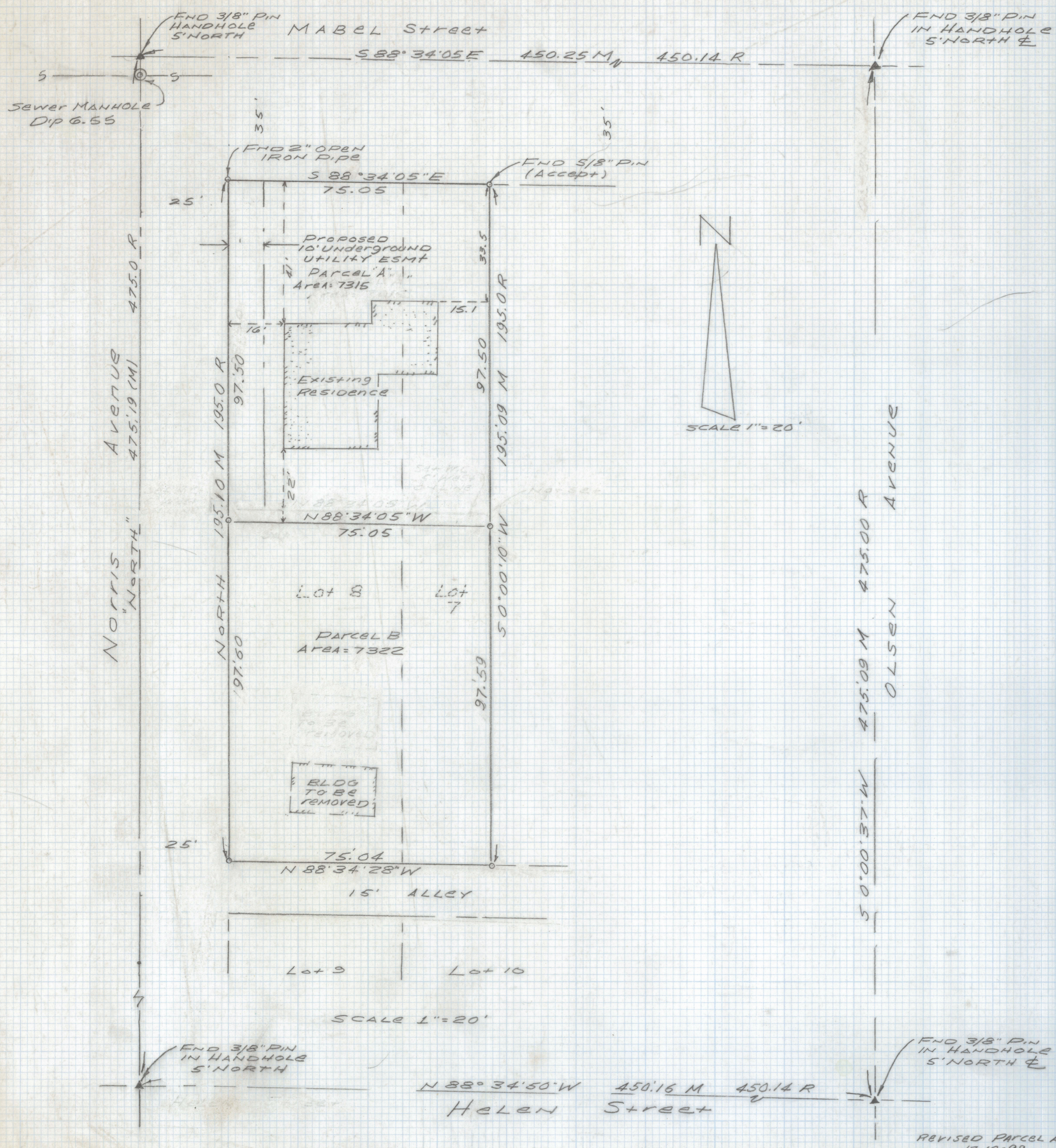


DISCLAIMER:

This unrecorded Record of Survey was donated to the City of Tucson. The City of Tucson provides this data for your personal use "as is." Additionally, the City of Tucson provides this information with the understanding that it is not guaranteed to be accurate, correct or complete and conclusions drawn from such information are the responsibility of the user.



GENERAL NOTES

1. ° Indicates set 1/2" pin mkd RLS 25405, unless noted.
2. M - Measured
3. R - Map or deed record
4. Basis of bearings: North assumed center line of Norris Avenue West side Block 32 of Olsen's Addition to the City of Tucson, Book 4 Page 88, Maps and Plats.
5. No title report furnished for this survey.

RESULTS OF SURVEY

Lot 8 and the West half of Lot 7, Block 32 of Olsen's Addition to the City of Tucson, according to the map of record in the office of the County Recorder of Pima County, Arizona in Book 4 of Maps and Plats at Page 88



DATE	REVISIONS	
EVERETT M. TRUEBLOOD LAND SURVEYING 2300 West Ian Place Tucson, AZ 85741 (520) 888-2549		
Drawn By: EMT	Checked By: EMT	Date: December 1, 1999
Job No. 99-220	Scale: 1" = 20'	Sheet 1 of 1