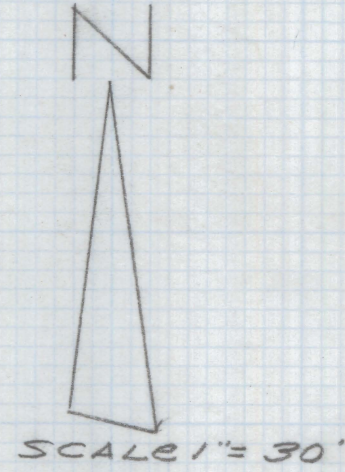
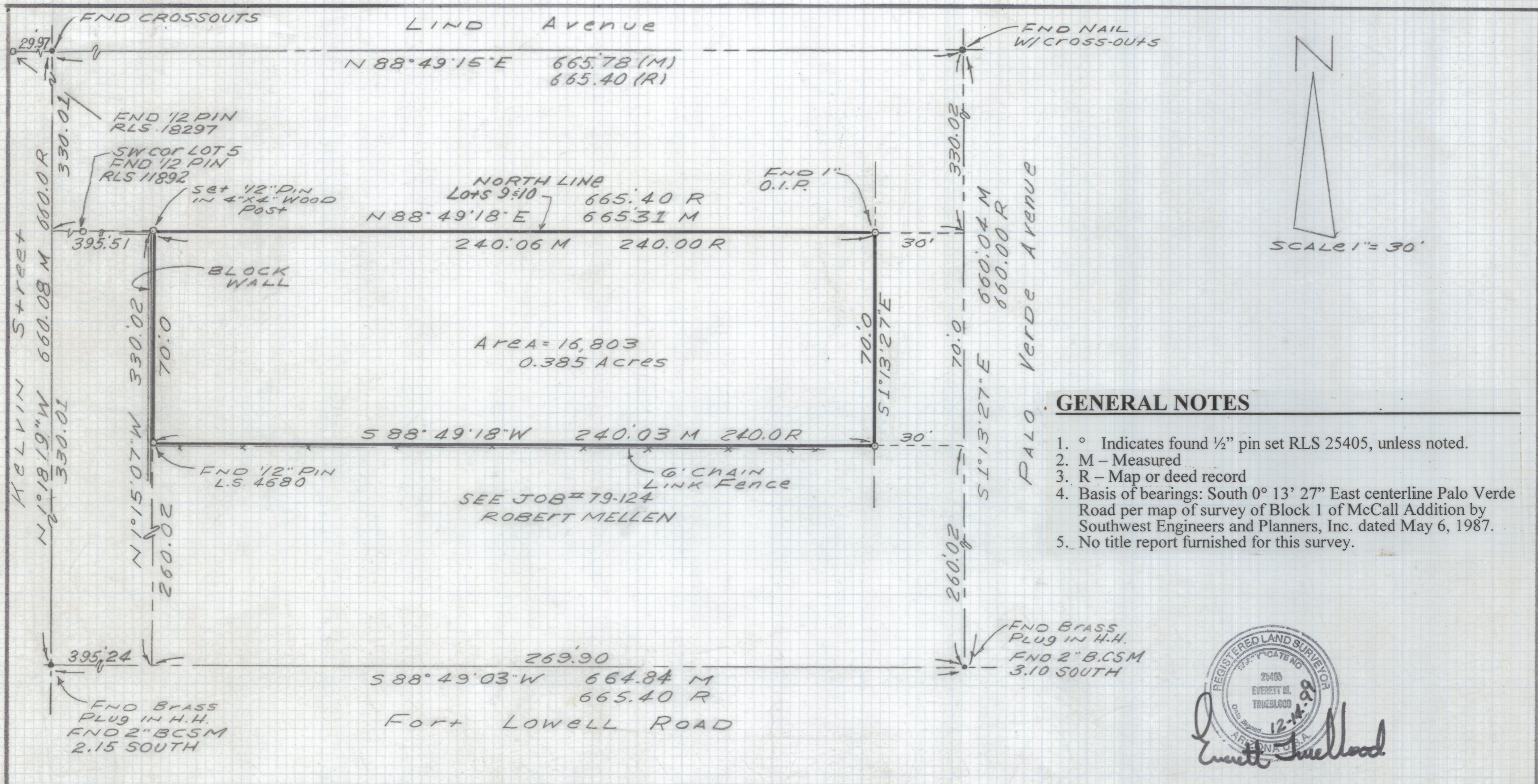


DISCLAIMER:

This unrecorded Record of Survey was donated to the City of Tucson. The City of Tucson provides this data for your personal use "as is." Additionally, the City of Tucson provides this information with the understanding that it is not guaranteed to be accurate, correct or complete and conclusions drawn from such information are the responsibility of the user.



GENERAL NOTES

1. ° Indicates found 1/2" pin set RLS 25405, unless noted.
2. M - Measured
3. R - Map or deed record
4. Basis of bearings: South 0° 13' 27" East centerline Palo Verde Road per map of survey of Block 1 of McCall Addition by Southwest Engineers and Planners, Inc. dated May 6, 1987.
5. No title report furnished for this survey.



RESULTS OF SURVEY

Of the North 70 feet of Lots 9 and 10 of Block 1 of McCall Addition according to the map of record in the office of the County Recorder of Pima County, Arizona in Book 4 of Maps and Plats at Page 55.

DATE		REVISIONS
EVERETT M. TRUEBLOOD LAND SURVEYING 2300 West Ian Place Tucson, AZ 85741 (520) 888-2549		
Drawn By: EMT	Checked By: EMT	Date: December 14, 1999
Job No. 99-225	Scale: 1" = 30'	Sheet 1 of 1

Z-2021-0167