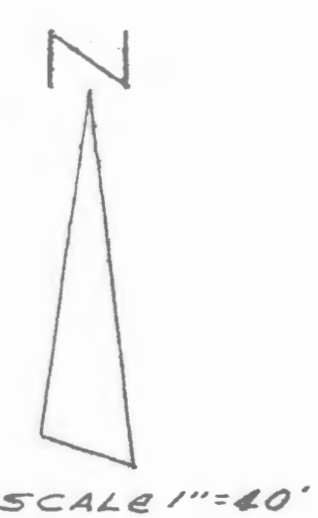
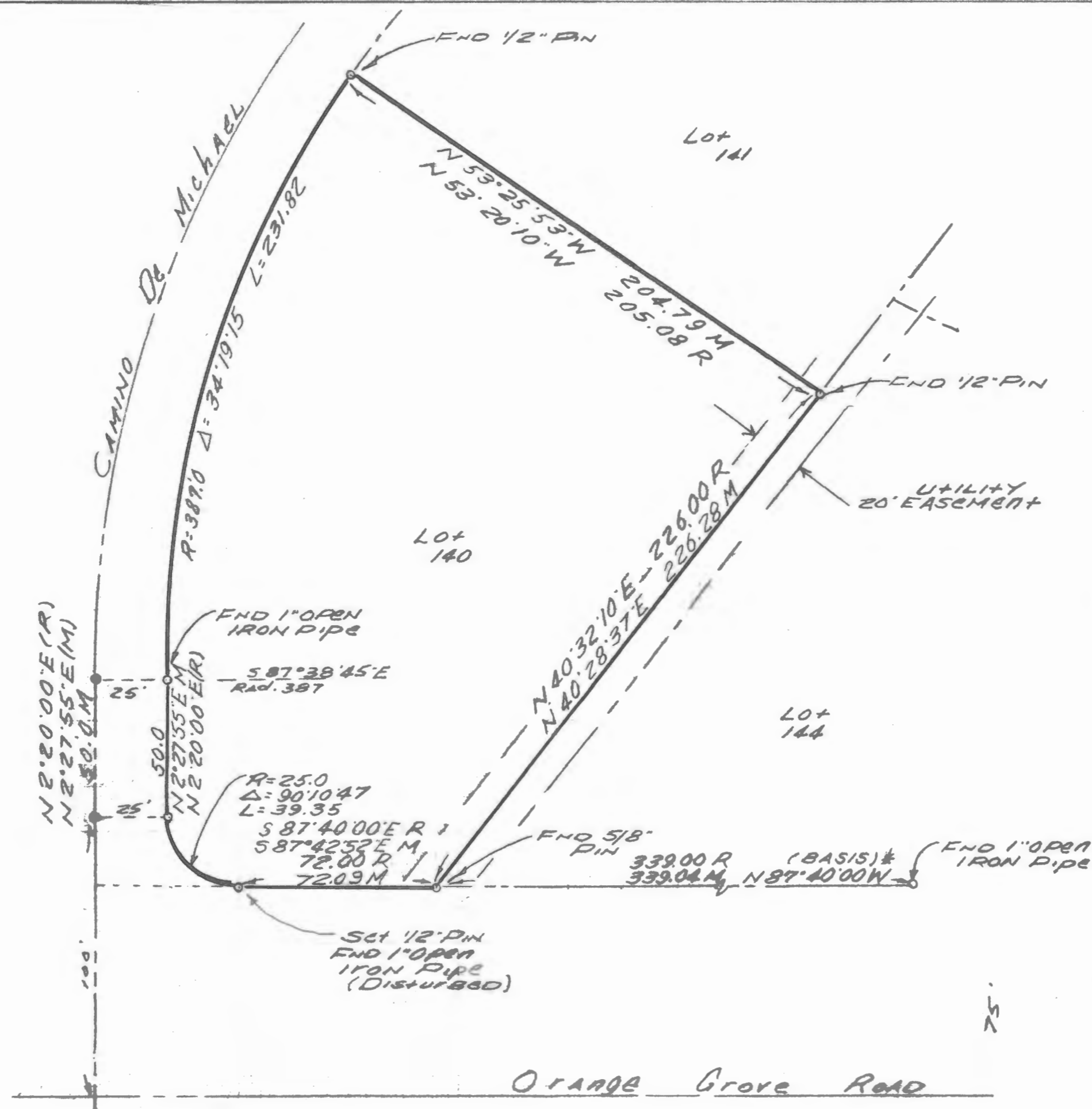


DISCLAIMER:

This unrecorded Record of Survey was donated to the City of Tucson. The City of Tucson provides this data for your personal use "as is." Additionally, the City of Tucson provides this information with the understanding that it is not guaranteed to be accurate, correct or complete and conclusions drawn from such information are the responsibility of the user.



Notes

- 1) ♀ INDICATES SET 1/2" PIN MKD R.L.S 25405 UNLESS NOTED
- 2) M- MEASURED
- 3) R- MAP OR DEED RECORD
- 4) * BASIS OF BEARINGS N 87° 40' 00" W SOUTH LINE LOT 144 OF SANTA CATALINA EST. BOOK 16 PAGE 17 M&P.
- 5) NO TITLE REPORT FURNISHED

Results of Survey

OF LOT 140 SANTA CATALINA ESTATES AS RECORDED IN BOOK 16 OF MAPS AND PLATS AT PAGE 17 IN THE OFFICE OF THE PIMA COUNTY RECORDER PIMA COUNTY ARIZONA.



Everett Trueblood
Registered Land Surveyor
TUCSON, ARIZONA
JOB# 00-23