

DISCLAIMER:

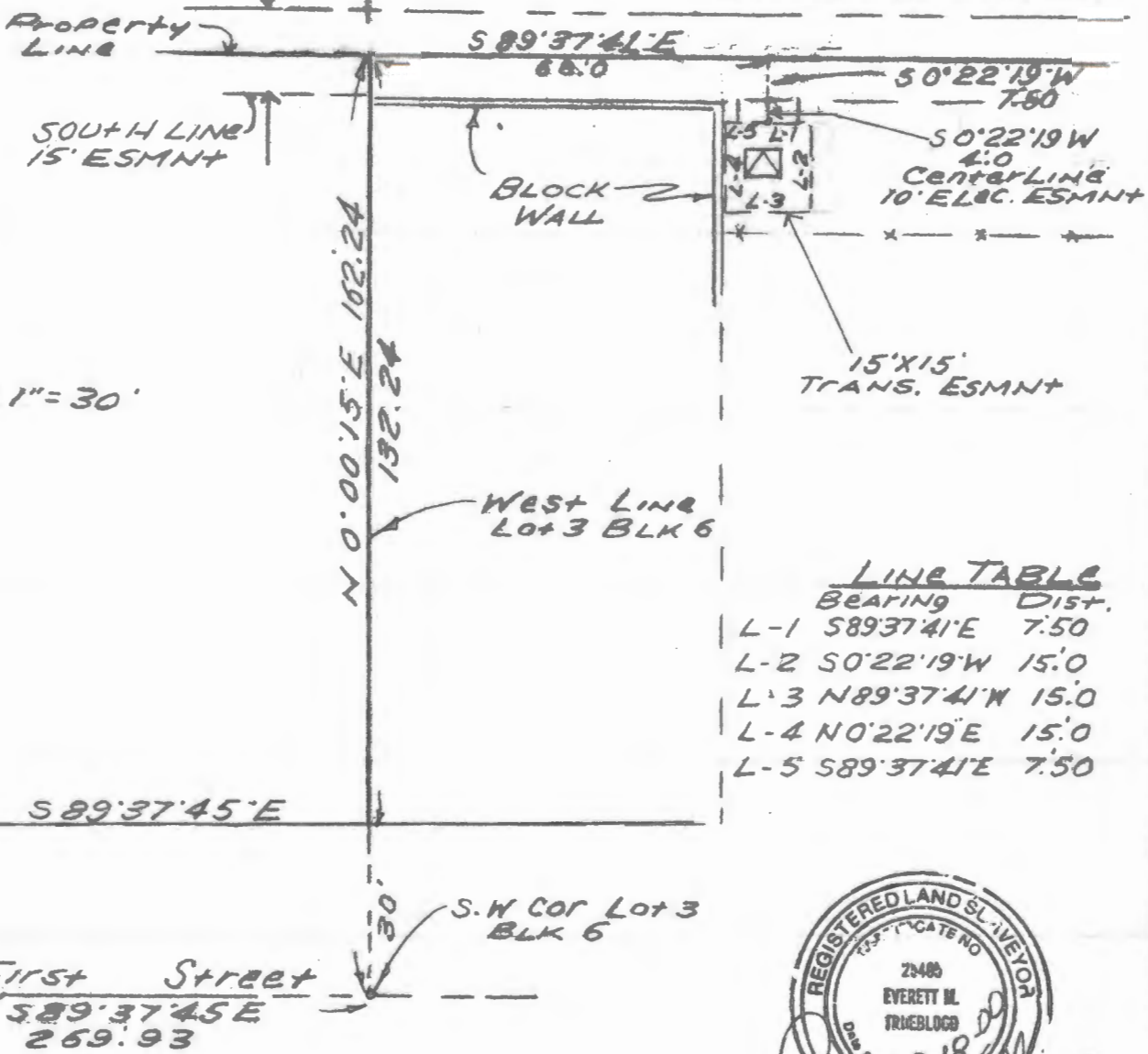
This unrecorded Record of Survey was donated to the City of Tucson. The City of Tucson provides this data for your personal use "as is." Additionally, the City of Tucson provides this information with the understanding that it is not guaranteed to be accurate, correct or complete and conclusions drawn from such information are the responsibility of the user.

15' UTILITY
INGRESS/EGRESS
ESMNT
9204/1016

5632 EAST
SPEEDWAY BLVD
EXISTING BLDG



SCALE 1" = 30'



LINE TABLE

BEARING	DIST.
L-1 S 89° 37' 41" E	7.50
L-2 S 0° 22' 19" W	15.0
L-3 N 89° 37' 41" W	15.0
L-4 N 0° 22' 19" E	15.0
L-5 S 89° 37' 41" E	7.50



SKETCH
OF

A 10 FOOT WIDE ELECTRIC EASEMENT
AND 15'X15' TRANSFORMER EASEMENT
LOCATED OVER A PORTION OF LOT 3
BLOCK 6 MITMAN ADDITION AS RECORDED
IN BOOK 4 OF MAPS AND PLATS AT
PAGE 43 IN THE OFFICE OF THE PIMA
COUNTY RECORDER PIMA COUNTY AZ.

EVERETT TRUEBLOOD
REGISTERED LAND SURVEYOR
TUCSON, ARIZONA
JOB # 00-40

Reference: See JOB # 98-145A