

DISCLAIMER:

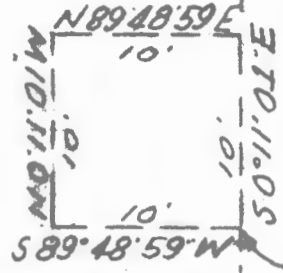
This unrecorded Record of Survey was donated to the City of Tucson. The City of Tucson provides this data for your personal use "as is." Additionally, the City of Tucson provides this information with the understanding that it is not guaranteed to be accurate, correct or complete and conclusions drawn from such information are the responsibility of the user.

NEOSHA Street

N.W. Corner
S.E. 1/4, SE 1/4 Sec 29



SCALE 1" = 60'



DETAIL
SCALE 1" = 10'



876.59

50° 10' 20" E

50' —————>
INGRESS/EGRESS
UTILITY ESMNT

25' —————>

West Line
S.E. 1/4, SE 1/4
Sec 29

Parcel 3

10' x 10'
TRANSFORMER ESMNT
(SEE DETAIL)

Prop.
Line

N 10° 11' 01" W

Parcel 4

90.0

304.45

S 89° 39' 37" E 329.45

SKETCH
OF
Legal Description

OF A 10 X 10 TRANSFORMER EASEMENT
LOCATED OVER A PORTION OF THE SOUTHEAST
QUARTER OF THE SOUTHEAST QUARTER OF
SECTION 29-13-13 G.S.R.B.C.M. PIMA COUNTY
ARIZONA.

Everett Trueblood
Registered Land Surveys
TUCSON, ARIZONA
JOB# 00-62

Z-2021-0190