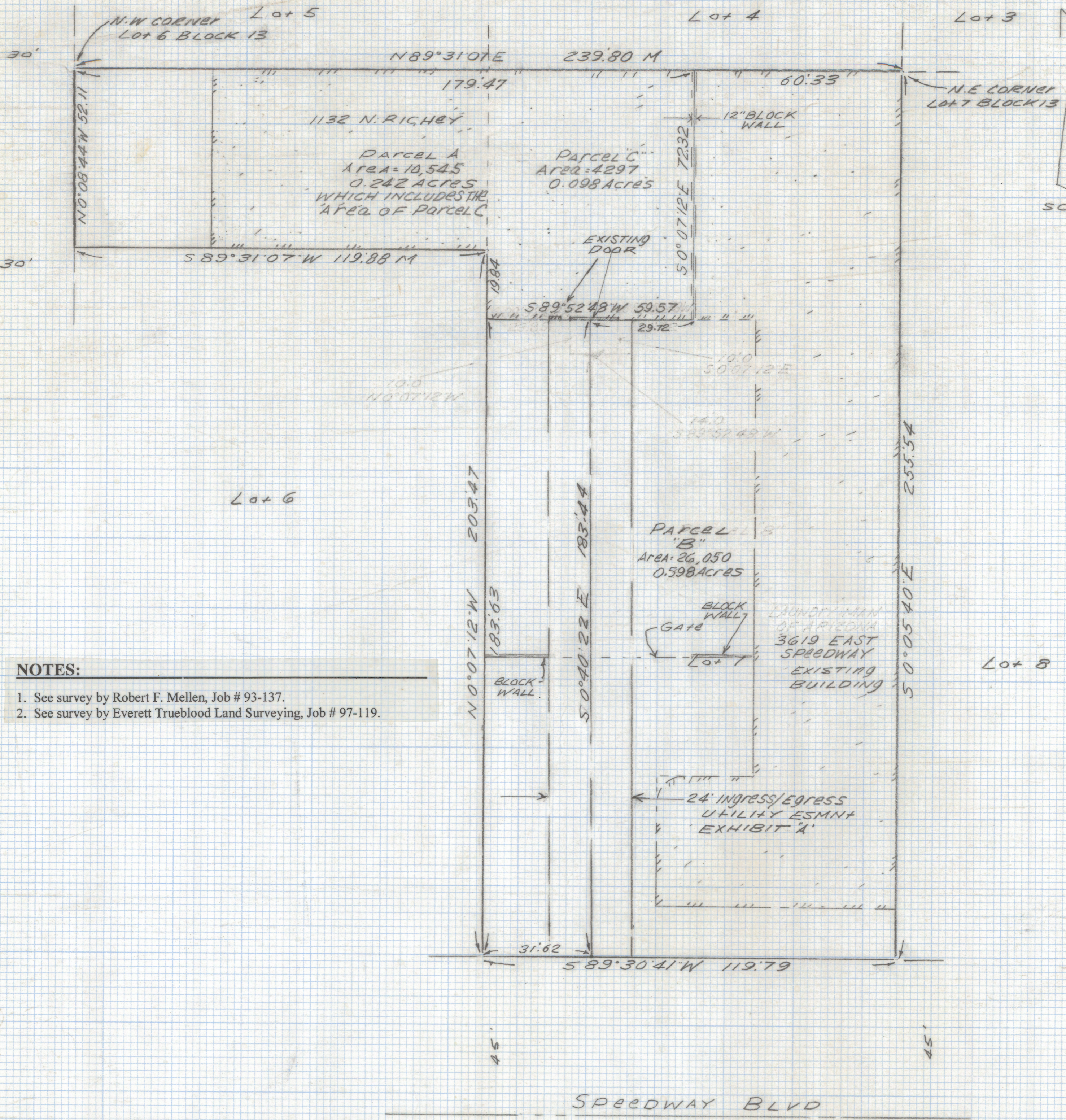


# **DISCLAIMER:**

**This unrecorded Record of Survey was donated to the City of Tucson. The City of Tucson provides this data for your personal use "as is." Additionally, the City of Tucson provides this information with the understanding that it is not guaranteed to be accurate, correct or complete and conclusions drawn from such information are the responsibility of the user.**

RICHEY BLVD



**NOTES:**

1. See survey by Robert F. Mellen, Job # 93-137.
2. See survey by Everett Trueblood Land Surveying, Job # 97-119.

**SKETCH OF LEGAL DESCRIPTIONS:**

Of a portion of Lot 6 and Lot 7 of Block 13 of Speedway Park Addition as shown in Book 4 of Maps and Plats at Page 95 in the office of the Pima County Recorder, Pima County, Arizona.



Revised Parcel A & B and Easement 12-20-00

DATE	REVISIONS
EVERETT M. TRUEBLOOD LAND SURVEYING	
2300 West Ian Place	
Tucson, AZ 85741	
(520) 888-2549	
Drawn By: EMT	Checked By: EMT
Job No. 00-191	Date: November 17, 2000
Scale: 1" = 20'	Sheet 1 of 1

Z-2021-0212