

DISCLAIMER:

This unrecorded Record of Survey was donated to the City of Tucson. The City of Tucson provides this data for your personal use "as is." Additionally, the City of Tucson provides this information with the understanding that it is not guaranteed to be accurate, correct or complete and conclusions drawn from such information are the responsibility of the user.

N.W. CORNER SECTION 25

N 89°46'55"W 2647.61

N 1/4 CORNER



SCALE 1" = 300'

62.0592
N 0°15'05"W 2650.29

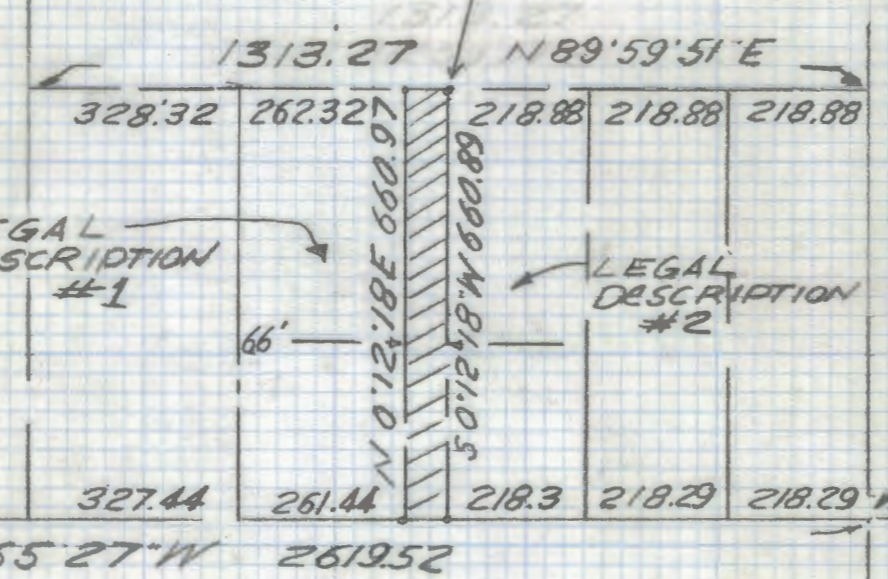
68.9692
N 42°12'05"

P.O.B. EXHIBIT "A"
N.E. CORNER
E 1/2 S.W. 1/4
S.E. 1/4 N.W. 1/4

Notes
1) THE DIMENSIONS SHOWN ON THE NORTHWEST QUARTER OF SECTION 25 ON THIS SKETCH WERE TAKEN FROM A SURVEY BY ROBERT F. MALLIN REGISTERED LAND SURVEYOR (RETIRED) JOB# 86-114

SKETCH OF LEGAL DESCRIPTION

OF EXHIBIT "A" LOCATED OVER A PORTION OF THE SOUTHEAST QUARTER OF THE NORTHWEST QUARTER OF SECTION 25 TOWNSHIP 13 SOUTH RANGE 12 EAST G.S.R.BEM PIMA COUNTY ARIZONA



NORTHWEST QUARTER SECTION 25



EVERETT TRUEBLOOD
Registered Land Surveyor
TUCSON ARIZONA
JOB# 00-202

Z-2021-0213