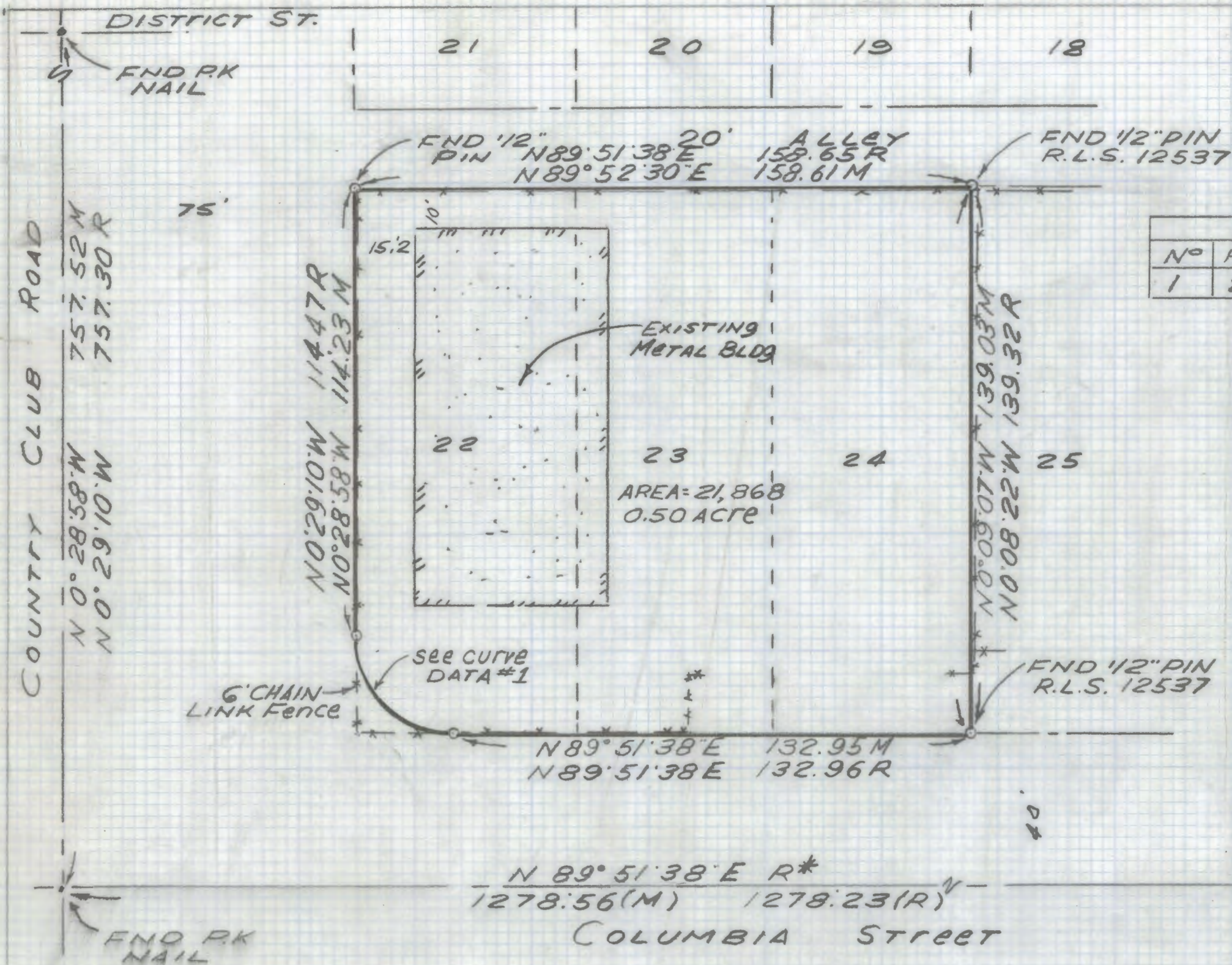


DISCLAIMER:

This unrecorded Record of Survey was donated to the City of Tucson. The City of Tucson provides this data for your personal use "as is." Additionally, the City of Tucson provides this information with the understanding that it is not guaranteed to be accurate, correct or complete and conclusions drawn from such information are the responsibility of the user.



Curve Data				
Nº	RADIUS	DELTA	TANGENT	LENGTH
1	25.0	89°39'24"	24.85	39.12

SCALE 1" = 30'

NOTES

- 1) ♀ INDICATES SET 1/2" PIN MKD R.L.S. 25405 UNLESS NOTED
- 2) M - MEASURED
- 3) R - MAP OR DEED RECORD
- 4) * BASIS OF BEARING N89°51'38"E CENTER LINE COLUMBIA ST. PER INDUSTRIAL PARK SITE BK 13 PG 56 MAPS AND PLATS.
- 5) NO TITLE REPORT FURNISHED FOR THIS SURVEY.

RESULTS OF SURVEY

OF LOTS 22, 23 AND 24 BLOCK D OF INDUSTRIAL PARK SITE AS RECORDED IN BOOK 13 OF MAPS AND PLATS AT PAGE 56 IN THE OFFICE OF THE PIMA COUNTY RECORDER PIMA COUNTY ARIZONA.



Everett Trueblood
Registered Land Surveyor
TUCSON, ARIZONA
JOB# 01-19