

DISCLAIMER:

This unrecorded Record of Survey was donated to the City of Tucson. The City of Tucson provides this data for your personal use "as is." Additionally, the City of Tucson provides this information with the understanding that it is not guaranteed to be accurate, correct or complete and conclusions drawn from such information are the responsibility of the user.

LINDEN STREET

*N89°35'30"E 950.60 M 950.53 R

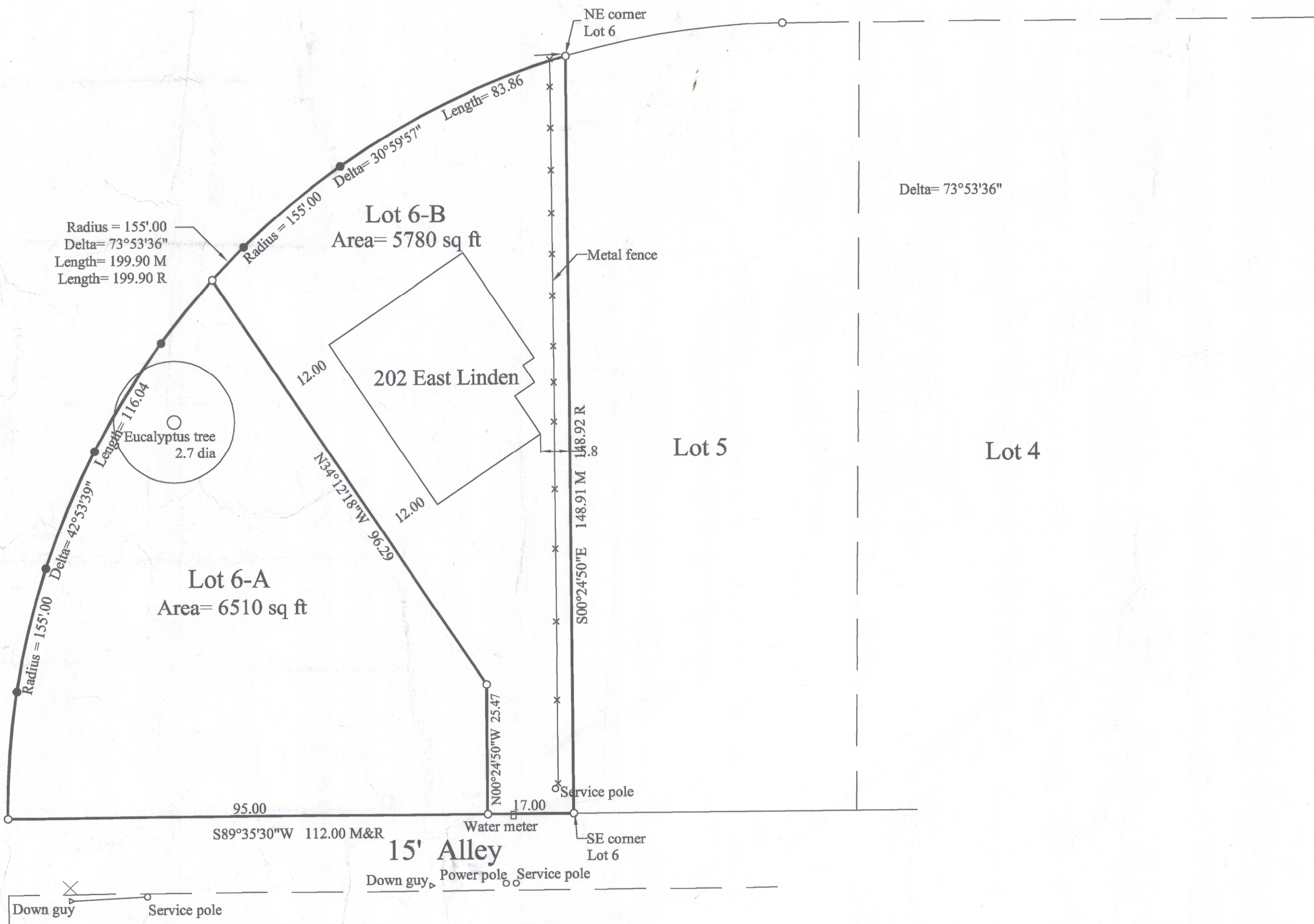


Scale 1"=20'

6th AVENUE

N00°24'50"W 315.70 M 315.62 R

39.60



Notes:

1. Ⓞ Indicates set 1/2" pin marked RLS 25405 unless noted.
2. M- Measured
3. R- Map or deed record
4. C- Calculated
5. BCSM- Brass cap survey monument
6. Basis of Bearings-North 89°35'30"East centerline of Linden Street North of Block 16 of Mansfield Heights Book 7 Page 90 Maps and Plats.
7. No title report was furnished for this survey. A search for easements was not made. Any easements shown were taken from subdivision plat.
8. There are underground utilities in the area. Before digging call Blue Stake.

Results of Survey

Of Lot 6 Block 17 of Mansfield Heights as recorded in Book 7 of Maps and Plats at Page 90 in the office of the Pima County Recorder, Pima County, Arizona.

DATE:		REVISIONS:	
Everett Trueblood Land Surveying			
6884 W. Hermitage PL Tucson, AZ 85743 (520) 888-2549			
Drawn By: EMT	Checked By: EMT	Date: September 22, 2015	
Job No. 15-96	Scale: 1" = 20'	Sheet 1 of 1	

7-2021-0233