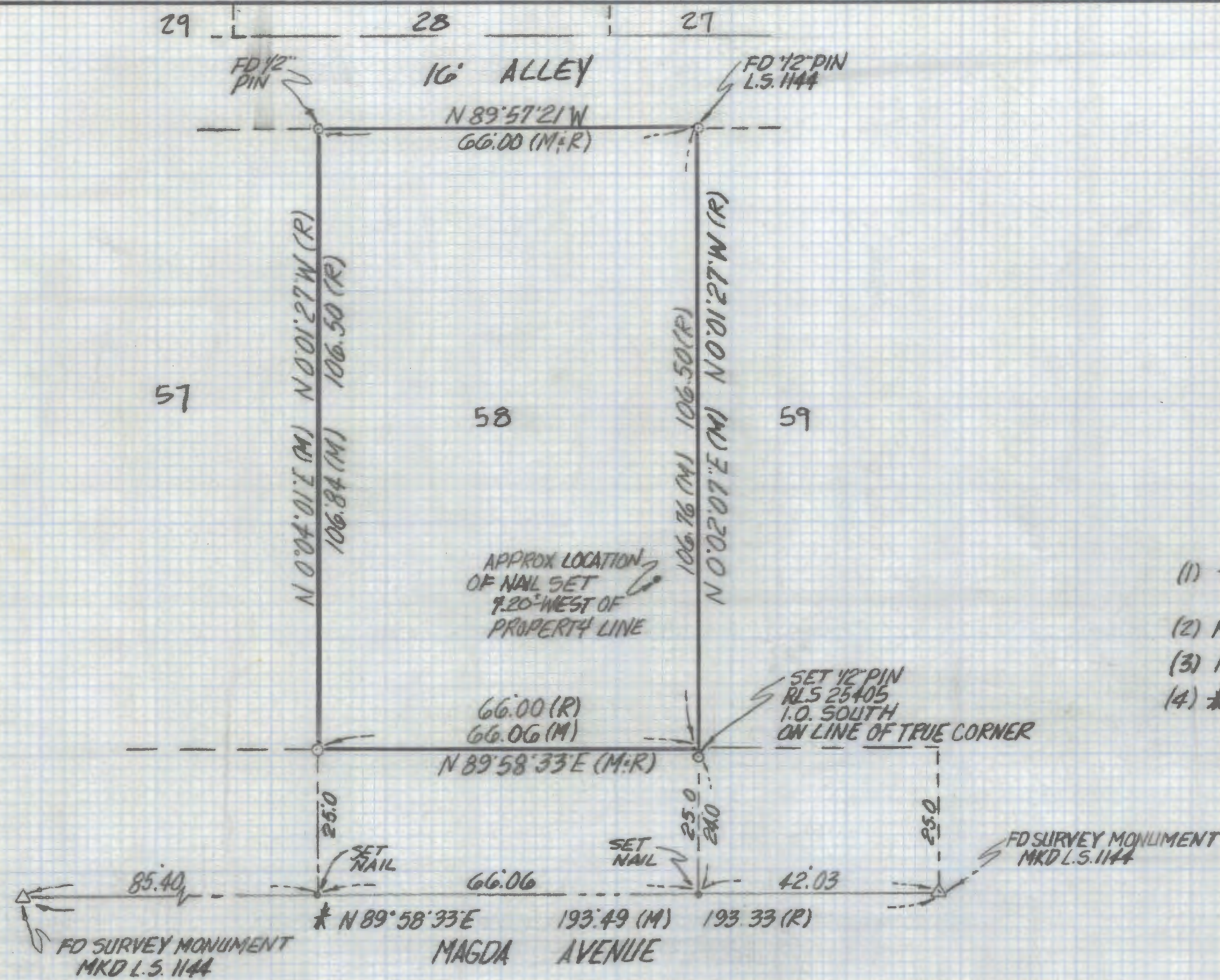


DISCLAIMER:

This unrecorded Record of Survey was donated to the City of Tucson. The City of Tucson provides this data for your personal use "as is." Additionally, the City of Tucson provides this information with the understanding that it is not guaranteed to be accurate, correct or complete and conclusions drawn from such information are the responsibility of the user.



NOTES

- (1) ♀ INDICATES SET 1/2" PIN MKD RLS 25405 UNLESS NOTED
- (2) M - MEASURED
- (3) R - MAP OR DEED RECORD
- (4) * BASIS OF BEARINGS N 89° 58' 33" E CENTERLINE @ MAGDA AVENUE PER LAKECREST NO 4 BOOK 23 PAGE 43 MAPS AND PLATS.

RESULTS OF SURVEY

OF LOT 58 LAKECREST N° 4 RECORDED IN BOOK 23 OF MAPS AND PLATS AT PAGE 43 IN THE OFFICE OF THE PIMA COUNTY RECORDER PIMA COUNTY ARIZONA



Everett M. Trueblood

EVERETT M. TRUEBLOOD
REGISTERED LAND SURVEYOR
TUCSON, ARIZONA
JOB JOHN BELCICH