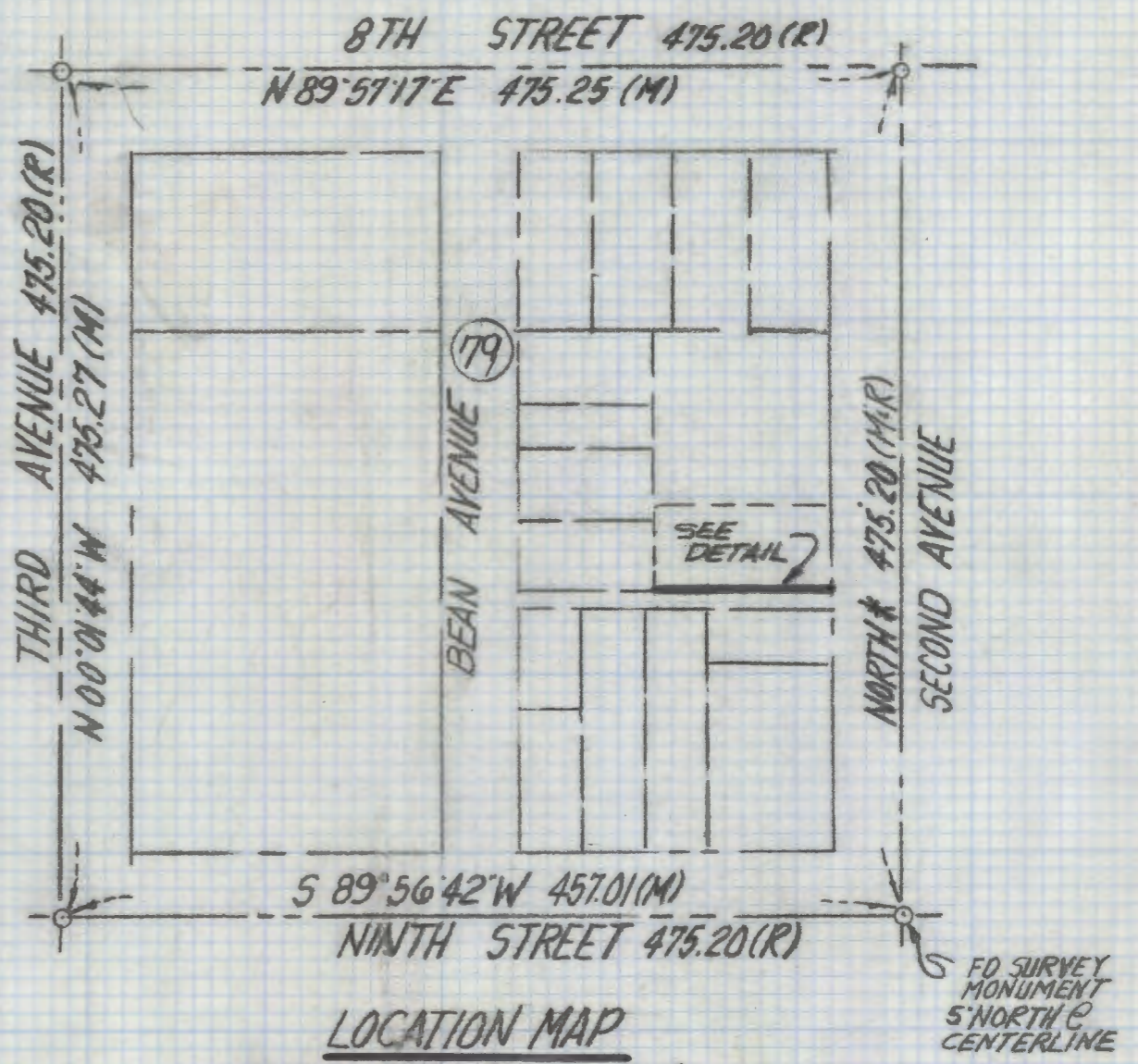
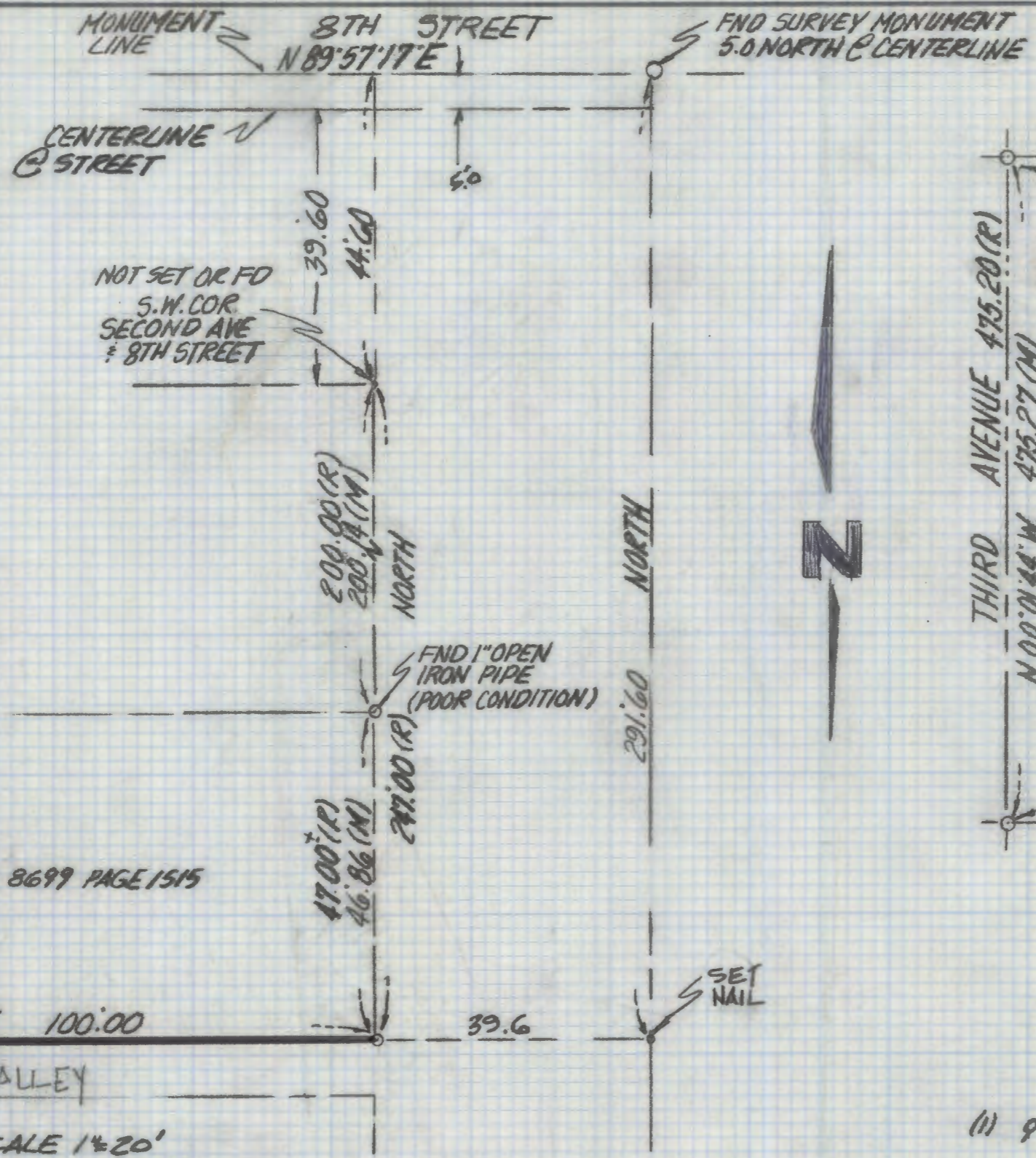


DISCLAIMER:

This unrecorded Record of Survey was donated to the City of Tucson. The City of Tucson provides this data for your personal use "as is." Additionally, the City of Tucson provides this information with the understanding that it is not guaranteed to be accurate, correct or complete and conclusions drawn from such information are the responsibility of the user.



DOC 8699 PAGE 1515

N 89° 57' 17" E 100.00

8.0 ALLEY

SCALE 1"=20'

RESULTS OF SURVEY

OF A PORTION OF BLOCK 79 CITY OF TUCSON RECORDED IN BOOK 3 OF MAPS AND PLATS AT PAGE 70 IN THE OFFICE OF THE PIMA COUNTY RECORDER PIMA COUNTY ARIZONA

NOTES

- (1) ♀ INDICATES SET 1/2" PIN MKD R.L.S. 25405 UNLESS NOTED
- (2) M- MEASURED
- (3) R- MAP OR DEED RECORD
- (4) * BASIS OF BEARINGS ASSUMED NORTH CENTERLINE SECOND AVENUE



Everett M. Trueblood

EVERETT M. TRUEBLOOD
REGISTERED LAND SURVEYOR
TUCSON, ARIZONA
JOB 219 N. SECOND AVE