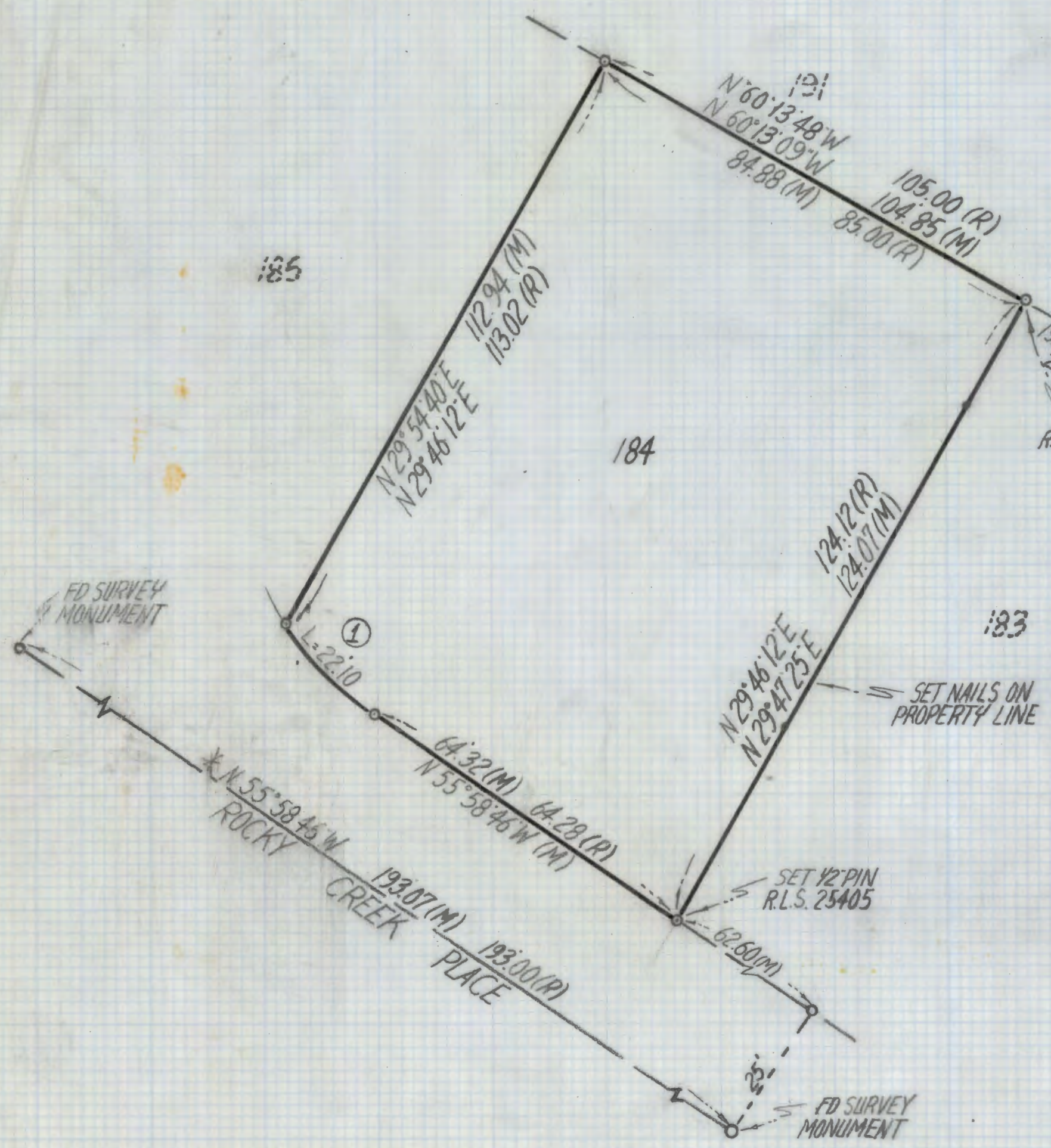
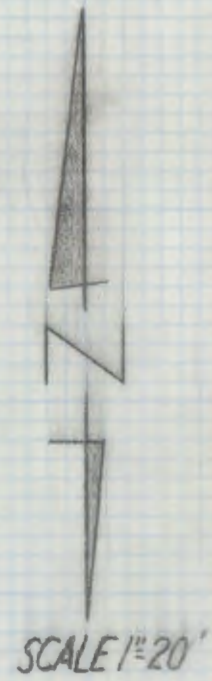


DISCLAIMER:

This unrecorded Record of Survey was donated to the City of Tucson. The City of Tucson provides this data for your personal use "as is." Additionally, the City of Tucson provides this information with the understanding that it is not guaranteed to be accurate, correct or complete and conclusions drawn from such information are the responsibility of the user.

| CURVE DATA | | | | | |
|----------------|--------|-----------|---------|--------|-------|
| N ^o | RADIUS | DELTA | TANGENT | LENGTH | CHORD |
| ① | 50.0 | 25°19'27" | 11.23 | 22.10 | 21.92 |



NOTES

- 1) ♀ INDICATES FOUND 5/8" STEEL PIN UNLESS NOTED
- 2) M- MEASURED
- 3) R- MAP OR DEED RECORD
- 4) * BASIS OF BEARINGS N 55° 58' 46" W CENTERLINE ROCKY CREEK PLACE PER QUAIL CANYON BOOK 32 PAGE 4 MAPS AND PLATS

RESULTS OF SURVEY

OF LOT 184 QUAIL CANYON AS RECORDED IN BOOK 32 OF MAPS AND PLATS AT PAGE 4 IN THE OFFICE OF THE PIMA COUNTY RECORDER PIMA COUNTY ARIZONA.

EVERETT M. TRUEBLOOD
REGISTERED LAND SURVEYOR
TUCSON, ARIZONA
JOB#