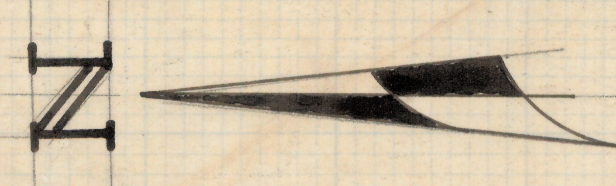


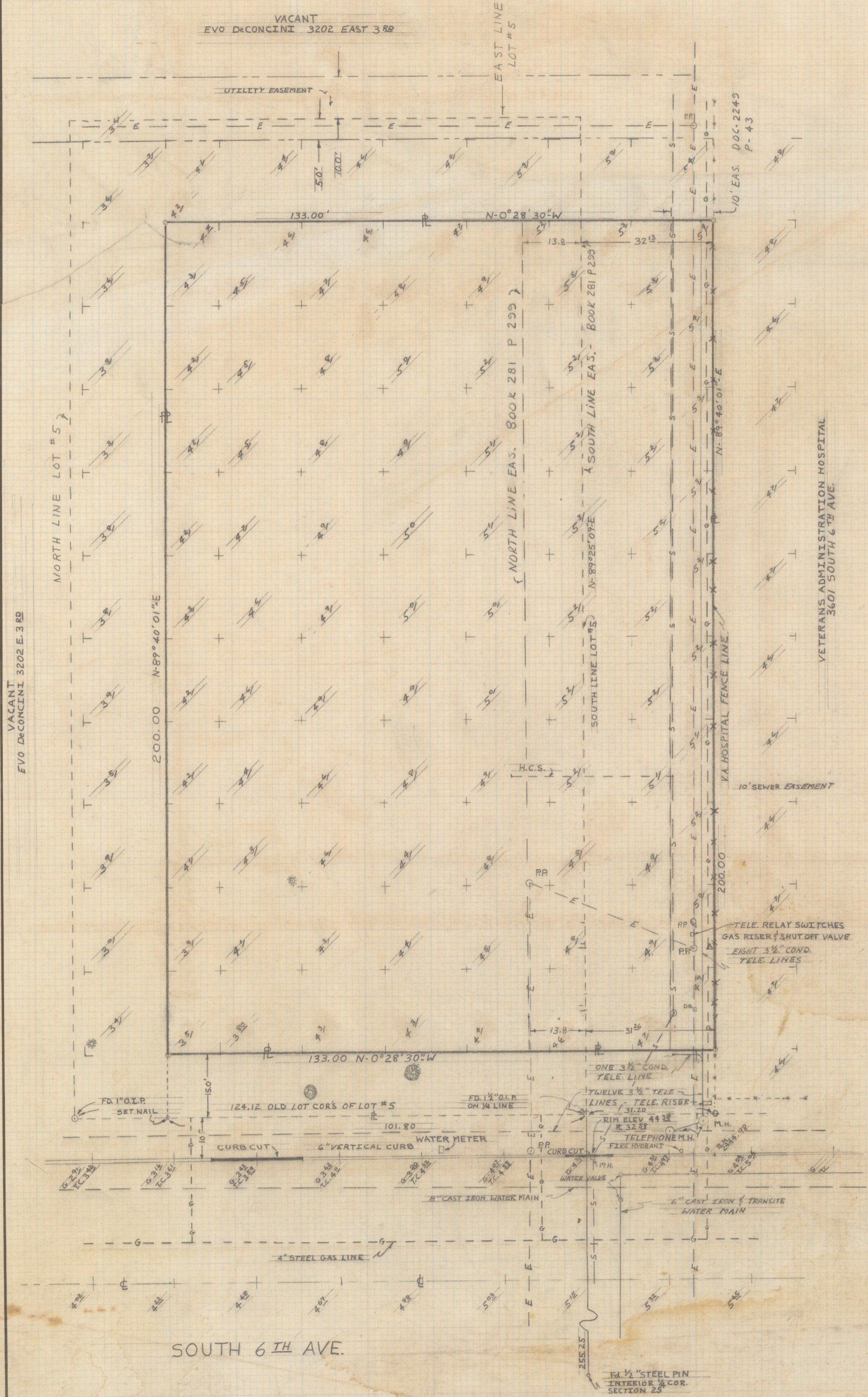
DISCLAIMER:

This unrecorded Record of Survey was donated to the City of Tucson. The City of Tucson provides this data for your personal use "as is." Additionally, the City of Tucson provides this information with the understanding that it is not guaranteed to be accurate, correct or complete and conclusions drawn from such information are the responsibility of the user.



SCALE 1/4" = 1.0'

VACANT
EVO DeCONCINI 3202 EAST 3RD



LEGEND

- SET 3/4" STEEL PIN MKD. L.S. 4680
- EXISTING ELEV.
- EXISTING ELEV. IN CURB GUTTER
- EXISTING ELEV. AT TOP OF CURB
- M.H. MAN HOLE
- PROPERTY LINE
- FLOW LINE
- OVERHEAD ELECTRIC
- 12" V.C.P. (SEWER)
- H.C.S. HOUSE CONNECTION SEWER
- EUCALYPTUS TREE
- MESQUITE TREE



RES
THAT PORTION OF LOT 5 OF SOUTHGATE SUBD. IN THE OFFICE OF THE PIMA COUNTY RECORDER QUARTER OF THE SOUTHEAST QUARTER OF SEC. 17 RIVER BASE AND MERIDIAN, DESCRIBED AS NORTH 0° 28' 30" WEST ALONG THE WEST LINE OF SAID SOUTH 0° 28' 30" EAST, 133.0 FEET TO THE NORTH 4 THE NORTH LINE OF THE VETERANS HOSPITAL 2 0° 28' 30" WEST, 31.20 FEET TO THE POINT OF BE

Z-2021-0262