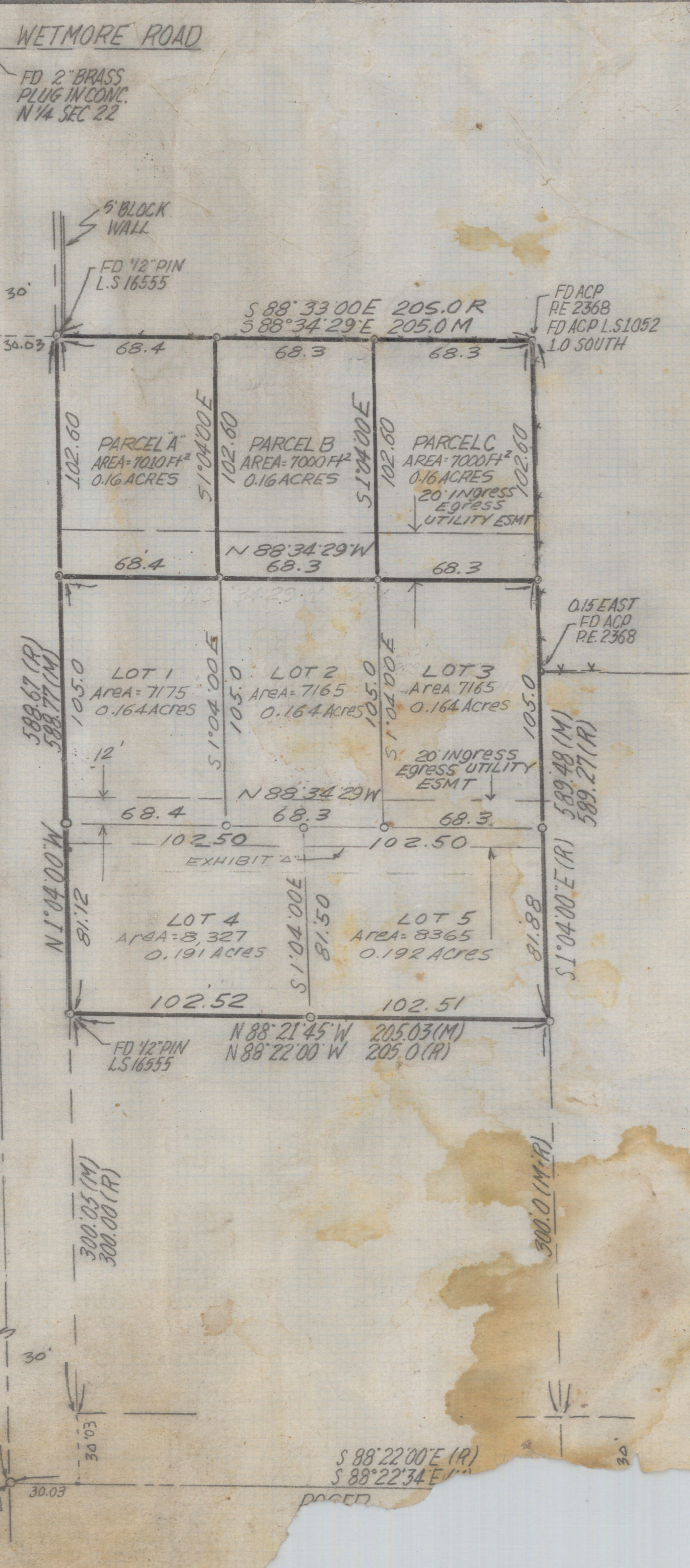


# **DISCLAIMER:**

**This unrecorded Record of Survey was donated to the City of Tucson. The City of Tucson provides this data for your personal use "as is." Additionally, the City of Tucson provides this information with the understanding that it is not guaranteed to be accurate, correct or complete and conclusions drawn from such information are the responsibility of the user.**



**NOTES**

- 1) ♀ INDICATES SET 1/2" PIN MKD R.L.S. 25405 UNLESS NOTED
- 2) M - MEASURED
- 3) R - MAP OR DEED RECORD
- 4) \* BASIS OF BEARINGS N 1° 04' 00" W WEST LINE OF THE SOUTHEAST QUARTER SECTION 22, T13S R13E PER DOCKET 8170 PAGE 651
- 5) NO TITLE REPORT FURNISHED
- 6) SEE DOCKET 8170 PG 651

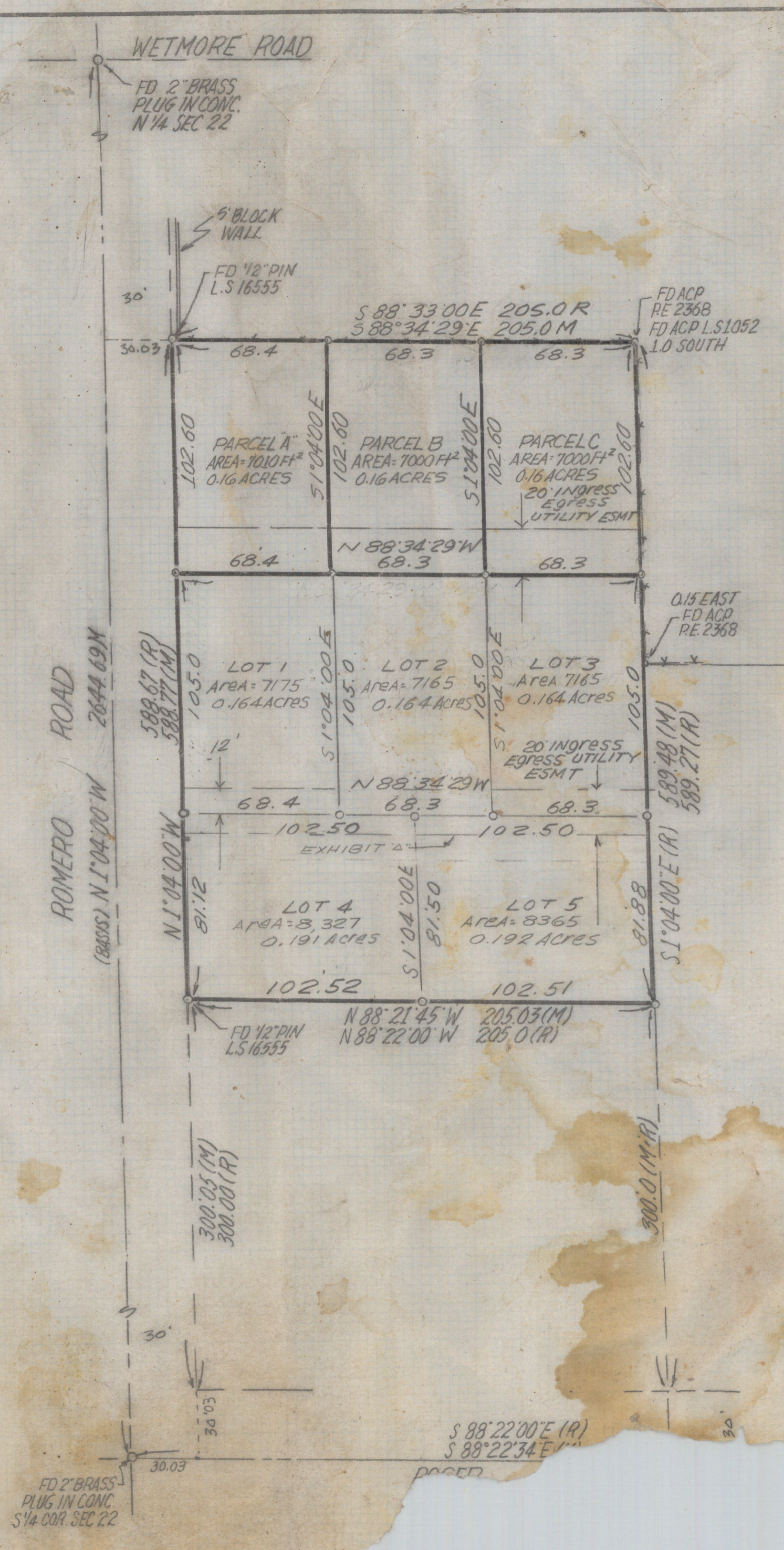
**RESULTS OF SURVEY**

OF A PORTION OF THE SOUTHEAST QUARTER OF SECTION 22 TOWNSHIP 13 SOUTH OF RANGE 13 EAST GILA AND SALT RIVER BASE AND MERIDIAN PIMA COUNTY ARIZONA

UTILITIES  
 REVISED 20-11-95 S/EGRESS  
 REVISED 10-18-00 LOTS 4-5  
 REVISED 8-15-91 PARCELS A,B,C  
 REVISED 2-12-97 REMOVE FENCE

EVERETT M.  
 REGISTERED L.A.  
 TUCSON, ARIZONA  
 JOB NO.  
 PH. 1-520-795-1111

**Z-2021-0268**



NORTH  
SCALE 1"=40'

NOTES

- 1) ♀ INDICATES SET 1/2" PIN MKD R.L.S. 25405 UNLESS NOTED
- 2) M-MEASURED
- 3) R-MAP OR DEED RECORD
- 4) \* BASIS OF BEARINGS N 1° 04' 00" W WEST LINE OF THE SOUTHEAST QUARTER SECTION 22, T13S, R13E PER DOCKET 8170 PAGE 651
- 5) NO TITLE REPORT FURNISHED
- 6) SEE DOCKET 8170 PG 651

RESULTS OF SURVEY

OF A PORTION OF THE SOUTHEAST QUARTER OF SECTION 22 TOWNSHIP 13 SOUTH OF RANGE 13 EAST GILA AND SALT RIVER BASE AND MERIDIAN PIMA COUNTY ARIZONA



UTILITIES  
 Revised 20' Ingress/Egress  
 Revised 10-18-00 Lots 1-5  
 Revised 8-15-97 PARCELS A, B, C  
 Revised 2-12-97 REMOVE FENCE

EVERETT M.  
 REGISTERED LAND SURVEYOR  
 TUCSON, ARIZONA  
 JOB NO.  
 PH. 1-5