

State of Arizona }  
County of Pima } ss.

We, the undersigned, hereby approve and accept this plat, as mortgagees, and are bound by its provisions.

*Herbert Brachman*

*Archib R. Conner*

*Daniel J. Gercke*  
Bishop of the Roman Catholic Church of the  
Diocese of Tucson

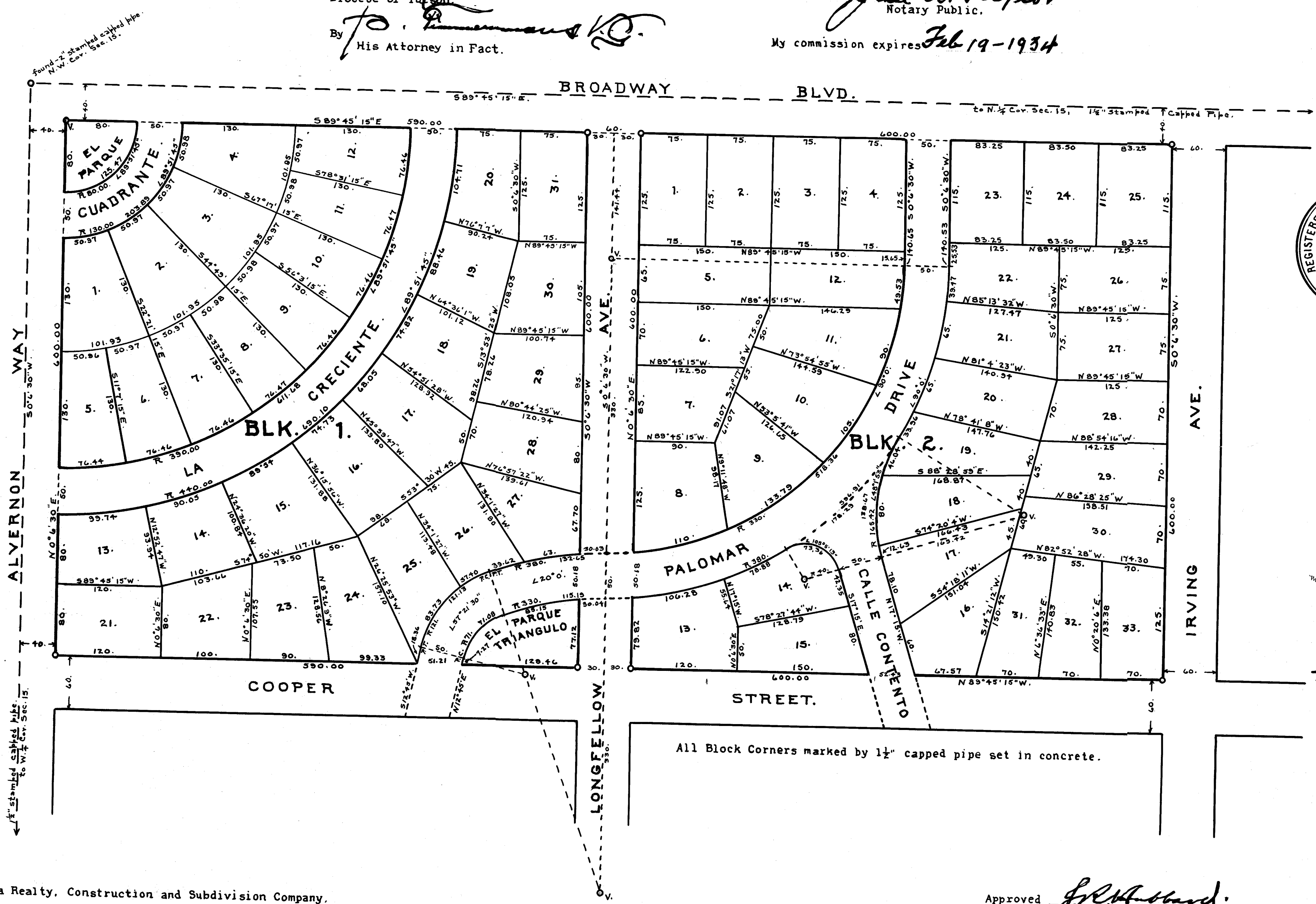
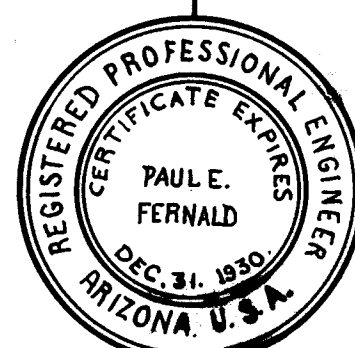
By *J. P. ...*  
His Attorney in Fact.

This instrument was acknowledged before me  
by the signatories thereto, this 5<sup>th</sup> day  
of June, 1930.

*Gene W. Taylor*  
Notary Public.

My commission expires *Feb 19-1934*

2  
6  
2



We, the Arizona Realty, Construction and Subdivision Company,  
hereby certify that we are the sole owners of the land contained  
in Blocks 1 & 2, SAN CLEMENTE Subdivision of Blocks 20 & 19,  
Country Club Heights - South Side, as shown on this plat, and  
we hereby agree to the subdivision of said land as shown hereon,  
and dedicate to the use of the Public forever the thoroughfares  
shown hereon.

*Arizona Realty Construction and Subdivision Co*

by *Stanley Williamson*  
President.

Attest *W.C. Capp*  
Secretary.

State of Arizona }  
County of Pima } ss.

This instrument was acknowledged before me

by the above signatories this 2nd. day of June, 1930.

*Esther M. Ryan*  
Notary Public.

My Commission expires *August 10, 1932*

Approved *Geo. T. Grove*  
City Engineer.

I, I. O. Cowan, Recorder and Ex-Officio Clerk of the City of  
Tucson, hereby certify that this plat was approved by the Mayor  
and Common Council of the City of Tucson, at a meeting held on  
the 2nd. day of June, 1930.

Signed *I. O. Cowan*  
Recorder and Ex-Officio City Clerk.

Approved *J.P. ...*  
County Engineer.

I, J. P. Ryan, Clerk of the Board of Supervisors of Pima  
County, Arizona, hereby certify that this plat was approved  
by the Board of Supervisors at a meeting held on the 2<sup>nd</sup> day  
of *June*, 1930.

Signed *J.P. Ryan*  
Clerk of the Board of Supervisors

PLAT OF BLOCKS 1 & 2.  
SAN CLEMENTE  
SUBDIVISION OF BLOCKS 20 & 19,  
COUNTRY CLUB HEIGHTS - SOUTH SIDE  
Situated in the N.W. 1/4 of Section 15,  
T.14S. R.14E, Pima County, Arizona.  
SCALE OF PLAT - 1 INCH = 80 FEET.  
Surveyed - May, 1930.  
by *Paul E. Fernald.*  
Registered Engineer.

*Tucson Title & Co*  
*June 11 30*  
*2:52 P*  
*6 Maps*  
*2*

*E.P. Morris Jr*